

Housing Models for People with Legal-System Involvement

JoAnne Page, President & CEO
The Fortune Society

David Condliffe, Executive Director
Center for Community Alternatives



@thefortunesoc



The Fortune Society: Castle & Castle Gardens





Castle Replication: Freedom Commons, Syracuse New York

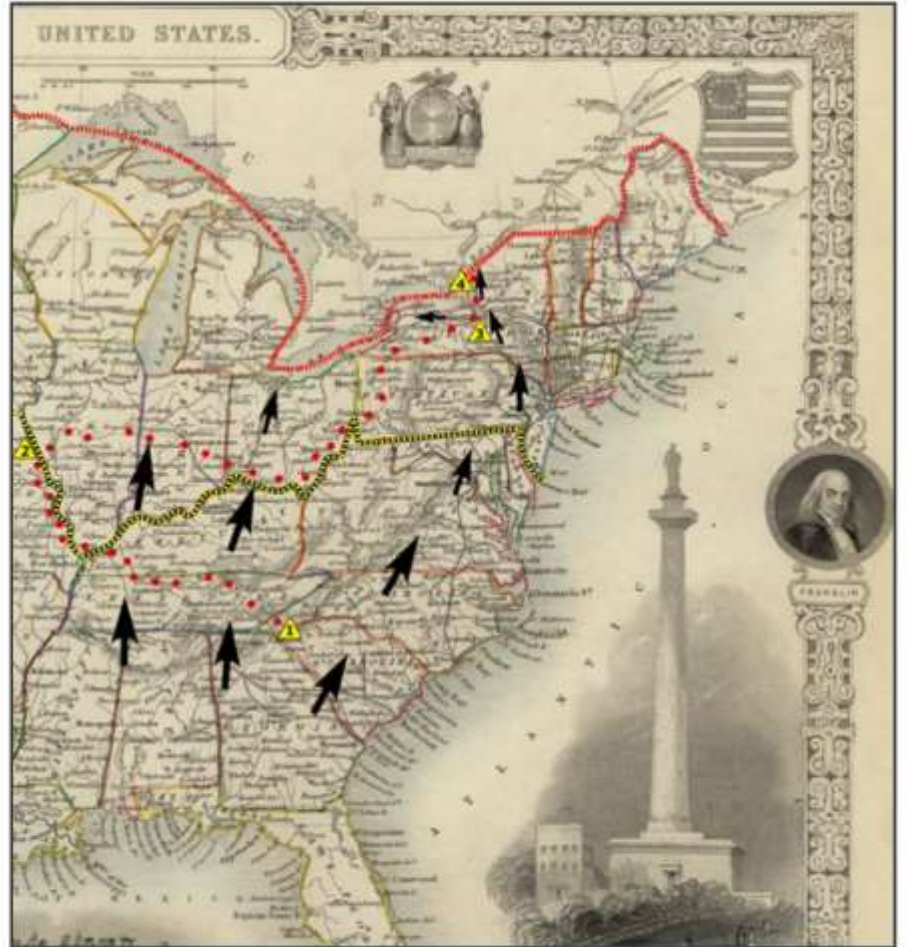




Freedom Commons

**A place to live, grow,
connect, and thrive**

**Named in honor
of Syracuse's
rich history in
the anti-slavery
movement
& its historic
significance in
the Underground
Railroad**



**A partnership
between the
Syracuse
Housing
Authority
&
the Center for
Community
Alternatives**



Syracuse Housing Authority

- property management



Center for Community
Alternatives

- case management
- supportive services

Assistance provided by the Fortune Society

**1998: The Fortune Society transformed a crackhouse
into a new home for people returning to the
community after incarceration...**

an innovative reentry housing program was born

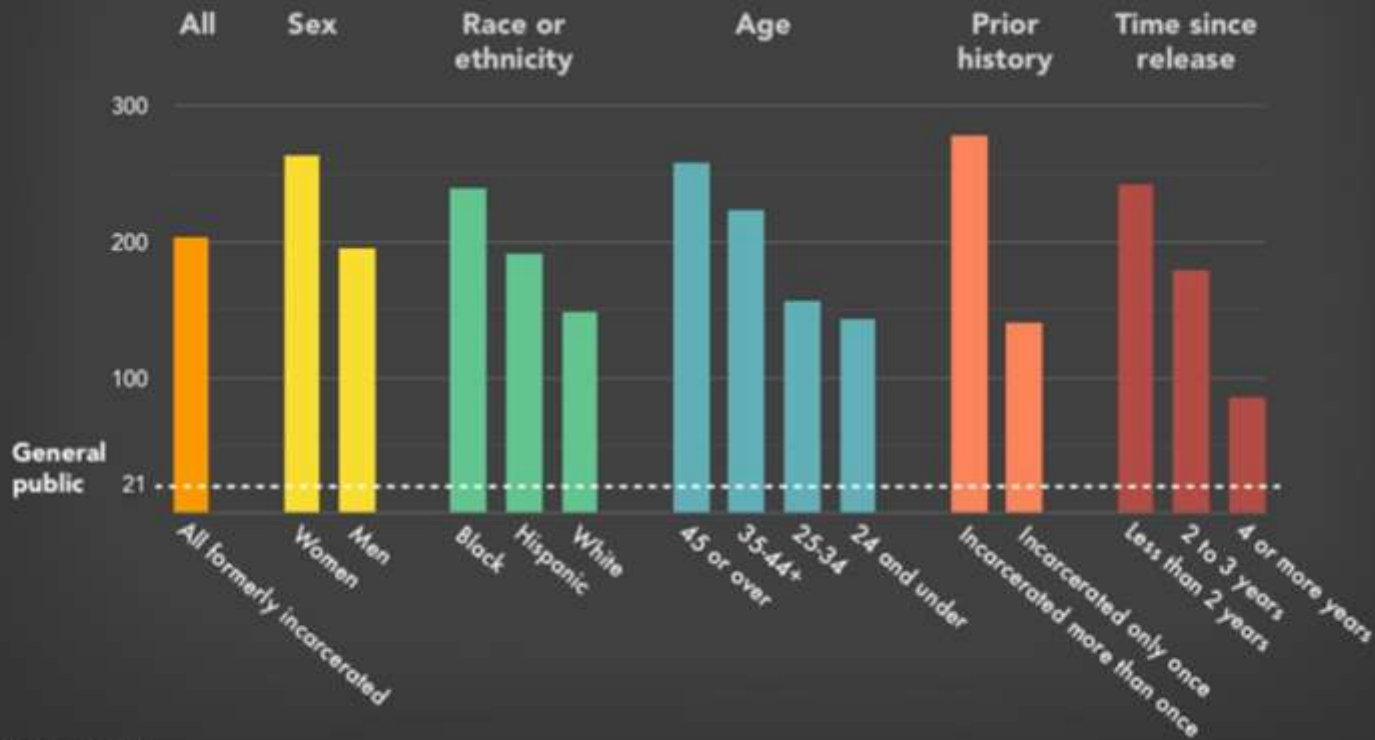


The Fortune Society
BUILDING PEOPLE, NOT PRISONS



Homelessness rates among formerly incarcerated people

Number of homeless per 10,000 formerly incarcerated people in each category, compared to the general public in 2008 (the most recent year data for formerly incarcerated people are available)



Homelessness & reentry in Central New York



"For people looking for housing, having a criminal history is often a non-starter"

CNY Fair Housing Report 2014



Release from institution is the 5th greatest cause of homelessness, surpassing mental health

2015 Consolidated Plan - City of Syracuse



From 1/1/18 - 11/30/18 there were 529 HUD homeless individuals in Onondaga, Oswego, and Cayuga Counties whose prior living situation was jail, prison or juvenile detention (12% of total)

CNY Housing & Homeless Coalition

Bringing a new model of housing to Syracuse



Funding sources - new construction





SWBR



Funding for rent, operations, and programs



Empire State Supportive Housing Initiative (ESSHI)-

Through NYS OTDA

Rental subsidy

& program funding for

Permanent Supportive Housing tenants



Section 8

Rental subsidy for

Permanent Supportive

Housing tenants



Onondaga Dept of Social Services

program funding for residents of

Freedom Commons Academy -
emergency/transitional housing

Freedom Commons - three types of housing under one roof



Freedom Commons Academy - emergency/transitional housing - 3 rooms with multiple beds
approx. 11 beds



Permanent Supportive Housing - 11 apartments
1,2,3 bedrooms



Affordable Housing - 43 apartments
1,2,3 bedrooms

BURT ST

OAKWOOD AVE

S MCBRIDE ST

VAN BUREN ST



Eligibility



Freedom Commons Academy

A **reentry program** with housing: emergency/transitional housing for individual adults who are returning after incarceration & would otherwise be homeless



Permanent Supportive Housing - permanent apartment + support services

up to 30% AMI; homeless adults and families; history of incarceration + qualifying disability



Affordable Housing

50% AMI, application chosen application & lottery through SHA



Permanent Supportive Housing



- *Rental subsidy**
- *Case management**
- *Support services**



Permanent Supportive Housing - Eligibility



- Homeless
- Adults & families
- Criminal Justice history - incarceration
- Household income limit (30% AMI)
- May have other disability / life challenge (mental health, SUD, etc)
- Need supportive services to maintain stable housing

Freedom Commons Academy: a reentry program with housing



Commitment to the program
and individualize service plan



No acts or threats of violence

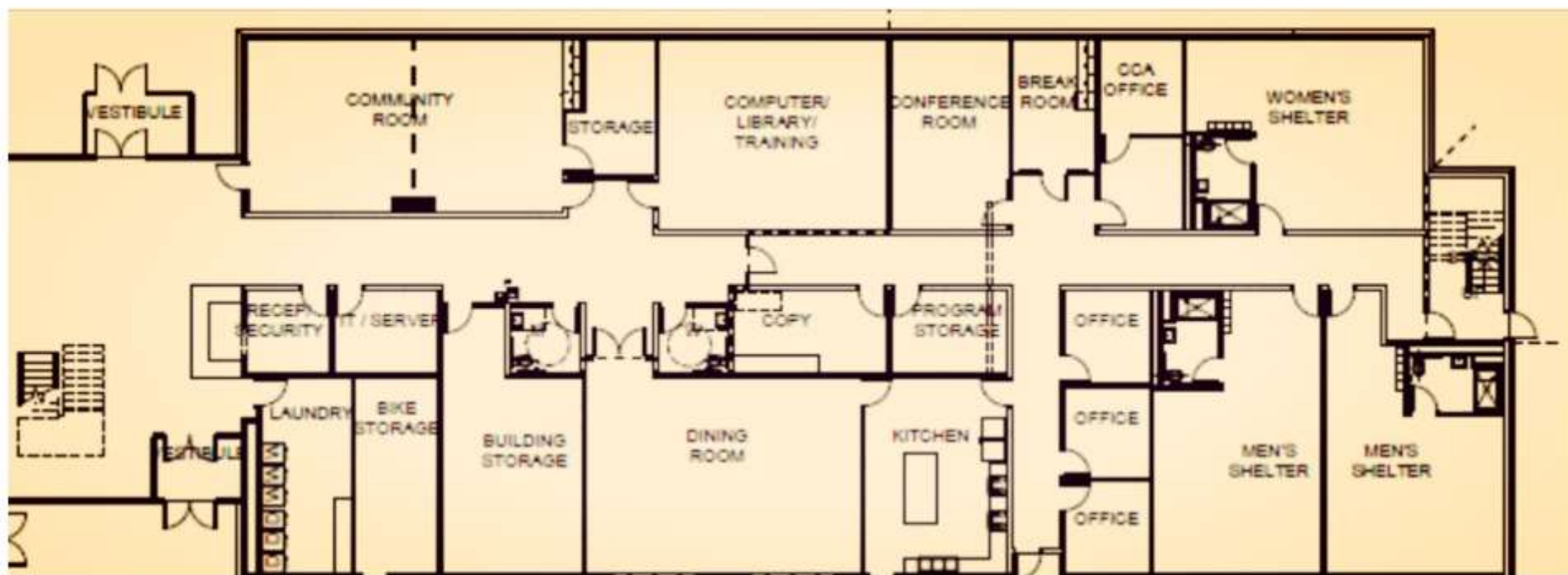


Comprehensive support services
to help transition and rebuild

Freedom Commons Academy - designed for individuals coming home soon after incarceration



- structured environment
- laboratory for new behaviors
- community building
- time to build a strong foundation in order to transition to their next stage of life in the community



Freedom Common Academy

Quotes from Fortune's Castle



"this is a place you come to experiment with new behaviors, new ways of being, new ways of dealing with people..."



"Coming from prison a lot of us have preconceptions of what people are about. So, it's relaxing to know that people are here to help you, they aren't here to get something from you..."



**35 hours/week
productive time**



**individualized
service plan**



**drug
screening**



house curfew



**am/pm focus
meeting**



The Thursday night community meeting

**where the answer is in the
room**

What type of support services are offered?

Permanent supportive housing residents & Freedom Commons Academy participants



- Recovery
- Employment & job readiness
- Literacy
- Medical exams
- Conflict resolution
- Legal services
- Mental health & counseling
- Perm. Housing
- Healthy relationships
- and more....



A top-down view of a wooden cutting board on a kitchen counter. Various fresh vegetables are arranged on the board, including a halved avocado, several cherry tomatoes, two yellow cherry tomatoes, three whole mushrooms, and a bunch of green onions. A small pile of sliced jalapeños and a knife are also visible.

community kitchen

A view of a computer lab. In the foreground, the back of a black Dell monitor is visible. To the right, a black keyboard and a mouse are on a light-colored desk. A black office chair is partially visible on the right side of the frame.

computer lab

A view of a community room featuring a large, light-colored wooden conference table. Several black office chairs are arranged around the table. In the background, a bright green wall is visible.

community room

Referrals to Freedom Commons PSH & Academy



HHC Continuum of
Care & partner
agencies



Law enforcement



County agencies



Parole/probation



Assigned counsel



Family & Self refer



Ond. Cnty Reentry
Task Force



Human service
providers



Courts



Jail/prison discharge
planners



CCA & SHA staff



Others

Freedom Commons CCA program staff



- Lived experience
- Knows the community
- Highly skilled - interpersonal & technical
- Experienced with population & systems
- Values & practices align with mission
- Familiar with local resources & partners

Continued challenges to housing for individuals returning home from incarceration



- Problem: Coordinated Entry programs prioritize “chronic homelessness” for limited housing programs & assistance
- HUD: incarceration for 90 days or more counts against “time homeless” - not considered chronically homelessness



Need for housing designed for reentry population: policies & programs

- Unrealistic expectation of 30 day turnover from emergency housing - need transitional housing options
- Household composition requirements- programs must allow people to define their “family”; some need support of an unrelated roommate
- Definition of homeless - ESSHI is broader than most HUD programs, able to prevent requirement that you must stay in shelter to qualify



Freedom Commons - opening summer 2019!



A word cloud shaped like a heart, composed of various terms related to community building and social justice. The words are in different sizes and orientations, with 'COMMONS', 'FREEDOM', and 'COMMUNITY' being the most prominent. Other words include 'NEIGHBORS', 'AFFORDABLE', 'SUPPORTIVE', 'GREEN BUILDING', 'FRIENDS', 'SOUTH SIDE', 'HOME', 'INCLUSIVE', 'SUPPORT', 'STRENGTH', 'PARTNERS', 'GROWTH', 'SYRACUSE', 'OPPORTUNITY', 'COLLABORATIVE', 'REUNITE', 'FAMILIES', 'INNOVATIVE', 'PROGRAMS', 'PEOPLE', 'NEW BEGINNINGS', and 'SAFE'.

COMMONS
FREEDOM
COMMUNITY
NEIGHBORS
AFFORDABLE
SUPPORTIVE
GREEN BUILDING
FRIENDS
SOUTH SIDE
HOME
INCLUSIVE
SUPPORT
STRENGTH
PARTNERS
GROWTH
SYRACUSE
OPPORTUNITY
COLLABORATIVE
REUNITE
FAMILIES
INNOVATIVE
PROGRAMS
PEOPLE
NEW BEGINNINGS
SAFE