

2021 Annual Meeting

March 11, 2021



the Network
Supportive Housing Network of NY

2020 Supportive Housing Openings



ACMH, Inc.

Ryer Avenue



2051 Ryer Avenue, Bronx

- ❑ 86 units, individuals and families
 - ❑ 52 supportive units, individuals
- ❑ Funding
 - ❑ *Pre-Development:* CSH
 - ❑ *Capital:* NYC HPD SHLP, HPD LIHTC 9%
 - ❑ *Operations/Services:* NYC DOHMH NY/NY III, NYC 15/15
- ❑ Architect
 - ❑ SLCE Architects, LLP
- ❑ Contractor
 - ❑ Mega Contracting Group LLC
- ❑ Syndicator
 - ❑ Red Stone Equity

Breaking Ground/ African American Planning Commission, Inc. Edwin's Place



7 Livonia Avenue, Brooklyn

- ❑ 126 units, individuals and families
 - ❑ 80 supportive units, individuals and families
- ❑ Funding
 - ❑ *Pre-Development:* CSH
 - ❑ *Capital:* NYS HFA LIHTC 4%, SHOP and Bonds, NYC HPD SHLP, NYS OTDA HHAP, FHLB NY
 - ❑ *Operations/ Services:* NYC DOHMH NY/NY III, HUD Section 8
- ❑ Architect
 - ❑ Robert A.M. Stern and Associates
- ❑ Contractor
 - ❑ Mega Contracting Group LLC
- ❑ Syndicator
 - ❑ Wells Fargo

The Bridge, Inc.

3500 Park



3500 Park Avenue, Bronx

- ❑ 114 units, individuals and families
 - ❑ 69 supportive units, individuals
- ❑ Funding
 - ❑ *Pre-Development:* LISC, Deutsche Bank, Leviticus Fund
 - ❑ *Capital:* NYS HFA LIHTC 4%, SHOP, NYC HPD SHLP, NYS OTDA HHAP, NYSERDA
 - ❑ *Operations/ Services:* NYS OMH ESSHI .
- ❑ Architect
 - ❑ Edelman Sultan Knox
Wood/Architects LLP
- ❑ Contractor
 - ❑ Mega Contracting Group LLC
- ❑ Development Consultant
 - ❑ A. Larovere Consulting LLC
- ❑ Syndicator
 - ❑ Boston Financial

CAMBA, Inc.

212 Hegeman Avenue



212 Hegeman Avenue, Brooklyn

- ❑ 70 units, individuals
 - ❑ 42 supportive units, individuals
- ❑ Funding
 - ❑ *Pre-Development:* CSH
 - ❑ *Capital:* NYS OTDA HHAP, NYC HPD SHLP, NYS HCR LIHTC 9%, JPMorgan Chase
 - ❑ *Operations/ Services:* NYS OMH ESSHI, NYS HCR Section 8, NYC HPD S+C
- ❑ Architect
 - ❑ Dattner Architects, P.C.
- ❑ Contractor
 - ❑ Galaxy G.C. Group
- ❑ Development Consultant
 - ❑ A. Larovere Consulting
- ❑ Syndicator
 - ❑ RBC Capital Markets

Cazenovia Recovery Systems

Garden Lofts

- ❑ 23 supportive units, individuals
- ❑ Funding
 - ❑ *Capital:* NYS OTDA HHAP
 - ❑ *Operations/ Services:* NYS OASAS
ESSHI
- ❑ Architect
 - ❑ Fontanese, Folts, Aubrecht, Ernst
- ❑ Contractor
 - ❑ Peyton Barlow



2495 Main Street, Buffalo

Center for Urban Community Services, Inc.

The Hannigan



310 West 127th Street, Manhattan

- ❑ 116 units, individuals and families
 - ❑ 71 supportive units, individuals and families
- ❑ Funding
 - ❑ *Pre-Development:* CSH
 - ❑ *Capital:* NYS OTDA HHAP, NYC HPD SHLP, NYC HDC ELLA, NYS HCR LIHTC 9%, NYSERDA
 - ❑ *Operations/Services:* NYC 15/15, NYC DOHMH NY/NY III, NYC HPD Section 8
- ❑ Architect
 - ❑ EQ Architecture
- ❑ Contractor
 - ❑ Bruno Frustaci Contracting
- ❑ Development Consultant
 - ❑ A. Larovere Consulting
- ❑ Syndicator
 - ❑ Raymond James

CitiLeaf Housing / Arker Companies

Chelsea Leaf South



- ❑ 37 supportive units, individuals
- ❑ Funding
 - ❑ *Capital:* NYC HPD MIH
 - ❑ *Operations/ Services:* NYC HASA, HUD McKinney Vento
- ❑ Architect
 - ❑ Aufgang Architects
- ❑ Contractor
 - ❑ Chateaux GC (Arker Companies)
- ❑ Developer
 - ❑ The Arker Companies

211 West 28th Street, Manhattan

Community Access

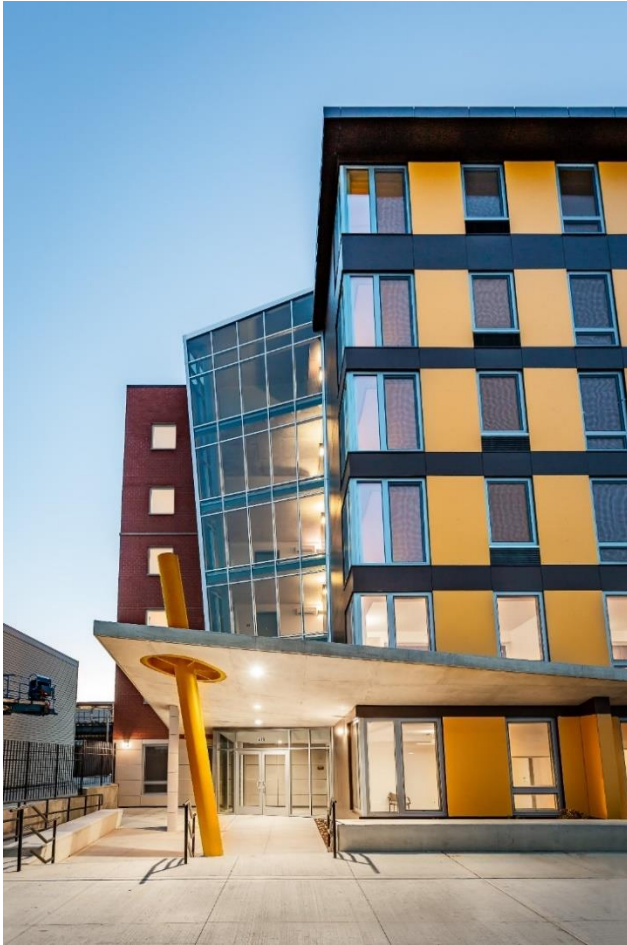
985 Bruckner Boulevard



985 Bruckner Boulevard, Bronx

- ❑ 215 units, individuals and families
 - ❑ 112 supportive units, individuals and families
- ❑ Funding
 - ❑ *Pre-Development:* NYC Acquisition Fund
 - ❑ *Capital:* NYC HDC ELLA, NYC HDC LIHTC 4%, NYC HPD SHLP
 - ❑ *Operations/ Services:* NYS OMH ESSHI, NYC HPD Section 8 and HUD Section 8
- ❑ Architect
 - ❑ think! Architecture and Design PLLC.
- ❑ Contractor
 - ❑ Monadnock Construction, Inc.
- ❑ Development Consultant
 - ❑ Alembic Community Development
- ❑ Syndicator
 - ❑ The Richman Group

Community Counseling and Mediation Beverly's Place



- ❑ 72 units, individuals and families
 - ❑ 43 supportive units, individuals
- ❑ Funding
 - ❑ *Pre-Development:* CSH
 - ❑ *Capital:* NYC HPD SHLP, NYC HPD LIHTC 9%, NYSERDA
 - ❑ *Operations/Services:* NYC 15/15
- ❑ Architect
 - ❑ Oaklander, Coogan & Vitto, Architects, P.C.
- ❑ Contractor
 - ❑ Cheever Development Corporation

402 Snediker Avenue, Brooklyn

Central New York Services / Helio Health Star Park Apartments



135 State Fair Boulevard, Syracuse

- ❑ 50 units, individuals
 - ❑ 25 supportive units, individuals
- ❑ Funding
 - ❑ *Pre-Developments:* CSH, NYS OMH
 - ❑ *Capital:* NYS HFA Bonds and SHOP,
 - ❑ *Operations/Services:* NYS OMH ESSHI
- ❑ Architect
 - ❑ Holmes, King, Kallquist
- ❑ Contractor
 - ❑ Christa Construction
- ❑ Development Consultant
 - ❑ CSD Development

Concern for Independent Living Liberty Station



1599 Route 112, Port Jefferson Station

- ❑ 77 units, individuals
 - ❑ 45 supportive units
- ❑ Funding
 - ❑ *Capital*: NYS HCR 9% LIHTC and SHOP, Suffolk County, CIL, and CPC
 - ❑ *Operations/ Services*: NYS OMH ESSHI
- ❑ Architect
 - ❑ H2M architects + engineers
- ❑ Contractor
 - ❑ Belfor Long Island
- ❑ Development Consultant
 - ❑ Betts Housing
- ❑ Syndicator
 - ❑ NEF

DePaul

Dewitt Clinton Apartments



423 Ann Street, Rome

- ❑ 80 units, individuals and families
 - ❑ 40 supportive units, families
- ❑ Funding
 - ❑ *Capital:* NYS HCR LIHTC SLIHC, HTF and SHOP, NYSERDA and DePaul
 - ❑ *Operations/ Services:* NYS OMH ESSHI
- ❑ Architect
 - ❑ SWBR Architects
- ❑ Contractor
 - ❑ LECESSE
- ❑ Development Consultant
 - ❑ Betts Housing Development
- ❑ Syndicator
 - ❑ Red Stone Equity

DePaul

La Rosa Villas



43 Mill Street, LeRoy

- ❑ 60 units, individuals and families
 - ❑ 30 supportive units, individuals
- ❑ Funding
 - ❑ *Pre-Development:* NYS OMH
 - ❑ *Capital:* NYS HCR LIHTC and SHOP, NYSERDA
 - ❑ *Operations/ Services:* NYS OMH ESSHI
- ❑ Architect
 - ❑ SWBR Architects
- ❑ Contractor
 - ❑ Christa Construction
- ❑ Development Consultant
 - ❑ Betts Housing Development
- ❑ Syndicator
 - ❑ Regions Affordable Housing

DePaul

Starting Line Apartments



1914 Dwyer Avenue, Utica

- ❑ 60 units, individuals and families
 - ❑ 30 supportive units, individuals and families
- ❑ Funding
 - ❑ *Capital:* NYS HCR LIHTC, SHOP, HTF, NYSERDA, NYS HHAP, NYS OMH
 - ❑ *Operations/ Services:* NYS OMH ESSHI
- ❑ Architect
 - ❑ SWBR
- ❑ Contractor
 - ❑ Lecesse Construction
- ❑ Development Consultant
 - ❑ Betts Housing Consultant
- ❑ Syndicator
 - ❑ NEF

Doe Fund

Crystal Towers



1355 Rogers Avenue, Brooklyn

- ❑ 128 units, individuals and families
 - ❑ 74 supportive units, individuals
- ❑ Funding
 - ❑ *Pre-Development:* CSH
 - ❑ *Capital:* NYS OTDA HHAP, NYC HPD SHLP, HDC LIHTC 4%, NYSERDA
 - ❑ *Operations/ Services:* NYC HASA NY/NY III, NYCHA Section 8
- ❑ Architect
 - ❑ DeLaCour & Ferrara Architects, P.C.
- ❑ Syndicator
 - ❑ Raymond James

Doe Fund Villa House



- ❑ 68 units, individuals
 - ❑ 27 supportive units, individuals
- ❑ Funding
 - ❑ *Capital:* NYC HPD SHLP, HPD LIHTC 9%
 - ❑ *Operations/ Services:* NYC HASA NY/NY III, NYCHA Section 8
- ❑ Architect
 - ❑ DeLaCour & Ferrara Architects, P.C.
- ❑ Contractor
 - ❑ Mega Contracting Group LLC
- ❑ Syndicator
 - ❑ Hudson Housing

3188 Villa Avenue, Bronx

HOGAR, Inc.

1084 Ogden Ave

- ❑ 50 supportive units, individuals
- ❑ Funding
 - ❑ *Capital*: OMH DASNY
 - ❑ *Operations/ Services*: NYS OMH ESSHI
- ❑ Architect
 - ❑ Catania-Nack Architects
- ❑ Contractor
 - ❑ Rhede Contracting
- ❑ Development Consultant
 - ❑ Dan Iacovella, Community Revival
- ❑ Syndicator
 - ❑ Richman Group



1084 Ogden Avenue, Bronx

Housing Visions/Salvation Army of Syracuse Ethel T. Chamberlain Residence



664 W. Onondaga Street, Syracuse

- ❑ 20 supportive units, individuals
- ❑ Funding
 - ❑ *Capital:* NYS OTDA HHAP, NYS HCR HOME, FHLB, Historic tax credits
 - ❑ *Operations/Services:* NYS OMH ESSHI
- ❑ Architect
 - ❑ Holmes, King & Kallquist
- ❑ Contractor
 - ❑ Housing Visions Construction Company

Hudson River Housing Fallkill Commons



17 & 18 Rose Street, Poughkeepsie

- ❑ 78 units, individuals
 - ❑ 39 supportive units, individuals
- ❑ Funding
 - ❑ *Capital:* NYS HCR LIHTC and SHOP, Dutchess County HOME, NYSERDA, Neighborworks
 - ❑ *Operations/ Services:* NYS OMH ESSHI
- ❑ Architect
 - ❑ Coppola Associates
- ❑ Contractor
 - ❑ Tern Construction
- ❑ Syndicator
 - ❑ Raymond James

MHANY / Brooklyn Community Services

1921 Cortelyou Road



1921 Cortelyou Road, Brooklyn

- ❑ 76 units, individuals and families
 - ❑ 46 supportive units, individuals
- ❑ Funding
 - ❑ *Capital:* NYC HPD SHLP, NYC HPD LIHTC 9%
 - ❑ *Operations/Services:* NYC 15/15
- ❑ Architect
 - ❑ Edelman Sultan Knox
Wood/Architects LLP
- ❑ Contractor
 - ❑ Mega Contracting Group

Providence Housing Development/ Catholic Charities Chemung County LaFrance Apartments



416 Powell Street, Elmira

- ❑ 37 units, individuals and families
 - ❑ 20 supportive units for individuals
- ❑ Funding
 - ❑ *Pre-Development:* CSH and Deutsche Bank
 - ❑ *Capital:*, NYS OTDA HHAP, NYS HCR 9% LIHTC and SHOP, NYSERDA, TD Bank
 - ❑ *Operations/Services:* NYS OMH ESSHI
- ❑ Architect
 - ❑ SWBR
- ❑ Contractor
 - ❑ Hamilton Stern .
- ❑ Syndicator
 - ❑ Regions Affordable Housing

Rehabilitation Support Services, Inc.

Clinton Avenue Apartments



102 - 124 Clinton Avenue, Albany

- ❑ 20 units, individuals
 - ❑ 10 supportive units, individuals
- ❑ Funding
 - ❑ *Pre-Development:* NYS OMH
 - ❑ *Capital:* NYS OTDA HHAP, NYS HCR HTF, FHLB, NYSERDA
 - ❑ *Operations/ Services:* NYS OMH ESSHI
- ❑ Architect
 - ❑ Harris A. Sanders, Architects, P.C..
- ❑ Contractor
 - ❑ Mercer Construction Co.
- ❑ Consultant
 - ❑ MM Development Advisors

United Veterans Beacon House

Smith Street



89 Smith Street, Medford

- ❑ 1 supportive unit, family
- ❑ Funding
 - ❑ *Capital:* NYS OTDA
HHAP, Suffolk County
Homes for Heroes
 - ❑ *Operations/Services:* NYS
OTDA ESSHI

2020

Openings of Affordable Housing with Supportive Set-Asides



2020

Openings of Affordable Housing with Supportive Set-Asides

Deerfield Commons

Warwick Properties

Services: Access Supports for Living

- ❑ 252 units, individuals and families
 - ❑ 34 supportive units, families



Edward Diana Way, Middletown

2020

Openings of Affordable Housing with Supportive Set-Asides

The Wilfrid

**Mega Contracting
Group**

Services: ACMH, Inc.

- ❑ 190 units, individuals and families
 - ❑ 40 supportive units, individuals



4181 Third Avenue, Bronx

2020

Openings of Affordable Housing with Supportive Set-Asides

Golden Ridge IV

Warwick Properties

Services: Access Supports for Living

- ❑ 81 units, individuals and families
 - ❑ 21 supportive units



Isabella Way, Monticello

2020

Openings of Affordable Housing with Supportive Set-Asides

Livonia II

HELP USA

**Services: HELP Social
Services Corp.**

- ❑ 56 units, families
 - ❑ 15 supportive units, families



463 Livonia Avenue, Brooklyn

2020

Openings of Affordable Housing with Supportive Set-Asides

The Eclipse

D&F Development

Services: Hour Children

- 158 units, individuals
 - 48 supportive units, individuals



126-30 Locust Manor Lane, Jamaica

2020

Openings of Affordable Housing with Supportive Set-Asides

Linwood Park

B&B Urban LLC

Services: Housing Plus

- ❑ 99 units, individuals and families
 - ❑ 30 supportive units, families



315 Linwood Street, Brooklyn

2020

Openings of Affordable Housing with Supportive Set-Asides

Clinton Avenue

Home Leasing

Services: DePaul

- ❑ 170 units, individuals and families
 - ❑ 40 supportive units



Clinton Avenue, Albany

2020

Openings of Affordable Housing with Supportive Set-Asides

Winston Gaskin Homes

Housing Visions

Services: YWCA of Syracuse and Onondaga County

- ❑ 46 units, individuals and families
 - ❑ 20 supportive units, individuals and families



Genesee Street, Syracuse

2020

Openings of Affordable Housing with Supportive Set-Asides

Butternut Crossing

Housing Visions

Services: Catholic Charities of Onondaga County

- ❑ 54 units, individuals and families
 - ❑ 11 supportive units, individuals



Butternut Avenue, Syracuse

2020

Openings of Affordable Housing with Supportive Set-Asides

Eastman Reserve

Pathstone

Services: YWCA of
Rochester/Monroe

- ❑ 187 units, families
- ❑ 27 supportive units, families



29 Goodwill Street, Rochester

2020

Openings of Affordable Housing with Supportive Set-Asides

Energy Square

RUPCO

**Service Provider:
RUPCO**

- ❑ 57 units, individuals and families
 - ❑ 9 supportive units, individuals



20 Cedar Street, Kingston

NYC 15/15 Scattered Site Awards 2020

- BRC, 90 units
- Jericho Project, 35 units
- Urban Pathways, 45 units

