

# 2019 Annual Meeting

April 11, 2019  
Scandinavia House  
New York City



the Network  
Supportive Housing Network of NY

# 2018 Supportive Housing Openings



# Breaking Ground

## The Webster



*411 East 178th Street, Bronx*

- ❑ 170 units, individuals
  - ❑ 90 supportive units, individuals
- ❑ Funding
  - ❑ *Capital:* NYC HPD SHLP, NYS OTDA HHAP, NYS OMH Capital, NYS HCR MRT Capital, NYS HFA SHOP, NYS HFA 4% LIHTC
  - ❑ *Operations/ Services:* NYC HRA HASA, NYC HPD Project-based Section 8, NYS OMH
- ❑ Architect
  - ❑ COOKFOX Architects
- ❑ Contractor
  - ❑ Mega Contracting
- ❑ Syndicator
  - ❑ Hudson Housing Capital

# The Bridge

## Maple/East New York Residence



*829 Maple Avenue, Brooklyn*

- ❑ 66 units, individuals and families
  - ❑ 50 supportive units, individuals
- ❑ Funding
  - ❑ *Pre-Development:* CSH
  - ❑ *Capital:* OMH/DASNY Bonds and 4% LIHTC, NYSERDA
  - ❑ *Operations/Services:* NYS OMH
- ❑ Architect
  - ❑ Edelman Sultan Knox Wood Architects LLP
- ❑ Contractor
  - ❑ D.P. Group General Contractors
- ❑ Syndicator
  - ❑ Hudson Housing Capital
- ❑ Investor
  - ❑ HSBC
- ❑ Consultant
  - ❑ A. Larovere Consulting

# The Bridge Melrose Commons



*425 East 161st Street, Bronx*

- ❑ 59 units, individuals and families
  - ❑ 58 supportive units, individuals
- ❑ Funding
  - ❑ *Capital:* NYC HPD SHLP, NYS OTDA HHAP, NYC HDC 4% LIHTC, NYC Reso. A
  - ❑ *Operations/ Services:* NYC DOHMH NY/NY III, NYCHA Project-based Section 8
- ❑ Architect
  - ❑ Magnusson Architecture and Planning
- ❑ Contractor
  - ❑ The Pilla Group
- ❑ Syndicator
  - ❑ National Equity Fund
- ❑ Consultant
  - ❑ A. Larovere Consulting

# Central New York Services Catherine Street



*Catherine Street, Syracuse*

- ❑ 50 units, individuals and families
  - ❑ 30 supportive units, individuals
- ❑ Funding
  - ❑ *Capital:* NYS HFA LIHTC 4%, SHOP and Bonds
  - ❑ *Operations/ Services:* NYS OMH
- ❑ Architect
  - ❑ C. Tomasselli
- ❑ Developer
  - ❑ CSD Housing
- ❑ Contractor
  - ❑ Christa Construction
- ❑ Syndicator
  - ❑ Richman Housing

# Comunilife Woodhull



*179 Throop Avenue, Brooklyn*

- ❑ 89 units, individuals
  - ❑ 54 supportive units, individuals
- ❑ Funding
  - ❑ *Pre-Development:* CSH
  - ❑ *Capital:* NYS DHCR MRT Capital, NYC HPD SHLP, NYS HCR 9% LIHTC, NYSERDA, Chase
  - ❑ *Operations/ Services:* NYC DOHMH NYC 15/15
- ❑ Architect
  - ❑ Monica Lopez Architects
- ❑ Contractor
  - ❑ Mega Contracting
- ❑ Investor
  - ❑ Sterling National Bank
- ❑ Syndicator
  - ❑ Hudson Housing Capital

# Comunilife/Walison Corp.

## West Farms Residence



*1815 West Farms Road, Bronx*

- ❑ 81 units, individuals and families
  - ❑ 80 supportive units, individuals
- ❑ Funding
  - ❑ *Capital:* NYC HPD SHLP, NYC HPD 9% LIHTC
  - ❑ *Operations/ Services:* NYC HASA NYC 15/15
- ❑ Architect
  - ❑ Newman Design Architect
- ❑ Contractor
  - ❑ D.P. Group General Contractors
- ❑ Syndicator
  - ❑ Hudson Housing Capital

# Concern for Independent Living Homes for Heroes



*Sycamore Ave, Central Islip*

- ❑ 3 family units
- ❑ Funding
  - ❑ *Capital:* NYS HHAP, Bank of America, Santander Bank, Signature Properties, MAXIMUS Foundation, CFIL
  - ❑ *Operations/ Services:* US HUD VASH Rental Assistance
- ❑ Architect
  - ❑ Fusion Architects
- ❑ Contractor
  - ❑ Belfor Long Island
- ❑ Consultant
  - ❑ Betts Housing Partners

# CSD Development/ MHA of Columbia-Greene Greenport Gardens



*Union Street, Hudson*

- ❑ 65 units, individuals and families
  - ❑ 38 supportive units, individuals
- ❑ Funding
  - ❑ *Capital:* NYS HCR LIHTC  
DASNY Bonds, OTDA  
HHAP, NYSERDA
  - ❑ *Operations/ Services:* NYS OMH
- ❑ Architect
  - ❑ Reform Architecture
- ❑ Contractor
  - ❑ Christa Construction
- ❑ Syndicator
  - ❑ Richman Housing

# DePaul Upper Falls



*Hudson Ave, Rochester*

- ❑ 150 units, individuals & families
  - ❑ 75 supportive units, individuals
- ❑ Funding
  - ❑ *Capital:* NYS HFA LIHTC and SHOP
  - ❑ *Operations/ Services:* NYS OMH
- ❑ Architect
  - ❑ SWBR Architects
- ❑ Contractor
  - ❑ Christa Construction
- ❑ Syndicator
  - ❑ Red Stone Equity Partners

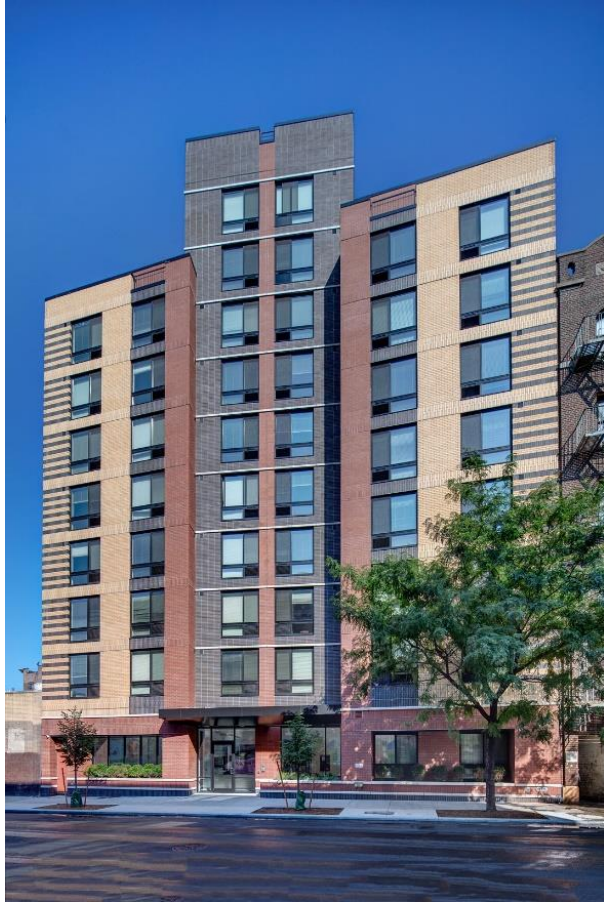
# The Doe Fund Webster Green



*3100 Webster Avenue, Bronx*

- ❑ 81 units, individuals
  - ❑ 41 supportive units, individuals
- ❑ Funding
  - ❑ *Pre-Development:* CSH
  - ❑ *Capital:* NYS DHCR MRT Capital, NYS DHCR SHOP 9% LIHTC, NYS OTDA HHAP/MRT, NYSERDA
  - ❑ *Operations/Services:* NYC HASA NYC 15/15
- ❑ Contractor
  - ❑ Galaxy General Contracting
- ❑ Consultant
  - ❑ Robert Sanborn Development
- ❑ Architect
  - ❑ Magnusson Architecture and Planning
- ❑ Investor
  - ❑ Citibank Community Capital
- ❑ Syndicator
  - ❑ Raymond James Tax Credit Funds

# Jericho Project Walton Avenue



*2065 Walton Avenue, Bronx*

- ❑ 89 supportive units, individuals
- ❑ Funding
  - ❑ *Capital:* NYC HPD SHLP (HOME), NYS OTDA HHAP, NYC HPD 9% LIHTC, NYCERS, Home Depot Donation, NYSEERDA
  - ❑ *Operations/Services:* NYS OMH
- ❑ Architect
  - ❑ MHG Architects
- ❑ Contractor
  - ❑ Cheever Development Corp.
- ❑ Syndicator
  - ❑ Wells Fargo

# Institute for Community Living

## Myrtle Avenue



*1066 Myrtle Avenue, Bronx*

- ❑ 89 supportive units, individuals
- ❑ Funding
  - ❑ *Capital:* NYC HPD SHLP (HOME), NYS OTDA HHAP, NYC HPD 9% LIHTC, NYCERS, Home Depot Donation, NYSEERDA
  - ❑ *Operations/Services:* NYS OMH NY/NY III
- ❑ Architect
  - ❑ Edelman Sultan Knox Wood Architects
- ❑ Contractor
  - ❑ Cheever Development Corp.
- ❑ Syndicator
  - ❑ Wells Fargo

# Phipps Houses

## Lee Goodwin Residence



*1950 Prospect Avenue, Bronx*

- ❑ 60 supportive units, individuals
- ❑ Funding
  - ❑ *Capital:* NYC HPD SHLP, NYCERS, NYC HPD 9% LIHTC
  - ❑ *Operations/ Services:* NYC DOHMH NYC 15/15, NYC HPD Section 8
- ❑ Architect
  - ❑ OCV Architects
- ❑ Contractor
  - ❑ The Pilla Group
- ❑ Syndicator
  - ❑ Hudson Housing Capital

# Postgraduate Center for Mental Health

## Gates Avenue



*500 Gates Avenue, Brooklyn*

- ❑ 68 units, individuals
  - ❑ 48 supportive units, individuals
- ❑ Funding
  - ❑ *Capital:* NYC HPD SHLP, NYS OTDA HHAP
  - ❑ *Operations/ Services:* NYC DOHMH NY/NY III, NYC HPD Project-based Section 8
- ❑ Architect
  - ❑ OCV Architects
- ❑ Contractor
  - ❑ Mega Contracting
- ❑ Syndicator
  - ❑ Hudson Housing Capital

# Postgraduate Center for Mental Health

## Marion Avenue



*2681 Marion Avenue, Bronx*

- ❑ 99 units, individuals
  - ❑ 65 supportive units, individuals and families
- ❑ Funding
  - ❑ *Capital:* NYS OMH Capital, NYS HFA 4% LIHTC, NYS OTDA HHAP, NYS DHCR MRT Capital
  - ❑ *Operations/ Services:* NYC DOHMH NY/NY III
- ❑ Architect
  - ❑ Urban Architectural Initiatives
- ❑ Contractor
  - ❑ Mega Contracting
- ❑ Syndicator
  - ❑ Hudson Housing Capital

# Services for the UnderServed

## Undercliff Avenue



*1434 Undercliff Avenue, Bronx*

- ❑ 74 units, families & individuals
  - ❑ 64 supportive units, individuals
- ❑ Funding
  - ❑ *Capital:* NYC HPD LIHTC 9%, NYC HPD SHLP, Citibank
  - ❑ *Operations/ Services:* NYC HRA HASA
- ❑ Architect
  - ❑ James McCullar Architecture
- ❑ Contractor
  - ❑ D.P. Group General Contractors/Developers Inc.
- ❑ Syndicator
  - ❑ Hudson Housing Capital

# Transitional Services for New York

## The Delson



*88-39 163rd Street, Queens*

- ❑ 44 units, individuals
  - ❑ 33 supportive units, individuals
- ❑ Funding
  - ❑ *Capital:* NYS DHCR SHOP 9% LIHTC, NYS OMH NY/NY III
  - ❑ *Operations/ Services:* NYC DOHMH NY/NY III
- ❑ Architect
  - ❑ Amie Gross Architects
- ❑ Contractor
  - ❑ D.P. Group General Contractors/Developers Inc.
- ❑ Syndicator
  - ❑ Richman Housing

# Urban Pathways/Extell Howard Amron House



- ❑ 11 supportive units, individuals
- ❑ Funding
  - ❑ *Capital*: NYC Inclusionary Housing Program
  - ❑ *Operations/ Services*: NYS OASAS
- ❑ Architect
  - ❑ Curtis & Ginsberg Architects

*166 East 100th Street, Manhattan*

# Opportunities for Broome, Inc.

## 88-90 Carroll Street



*Carroll Street, Binghamton*

- ❑ 10 supportive units, individuals and families
- ❑ Funding
  - ❑ *Capital:* NYS OTDA HHAP, United Way
  - ❑ *Operations/ Services:* NYS ESSHI
- ❑ Architect
  - ❑ PA Every, LLC
- ❑ Contractor
  - ❑ WL Kine

**2018**

# **Openings of Affordable Housing with Supportive Set-Asides**



2018

# Openings of Affordable Housing with Supportive Set-Asides

## *The Eclipse*

**D & F Development Group**

**Services: Hour Children**

- 82 units, individuals and families
  - 13 supportive units, individuals and families



*126-30 Locust Manor Lane, Queens*

2018

# Openings of Affordable Housing with Supportive Set-Asides

## *St. Augustine Apartments*

New York Institute for  
Human Development/  
Association for New York  
Catholic Homes

Services: Catholic Charities  
Community Services

- 112 units, individuals and families
  - 35 supportive units, families



*1180 Fulton Avenue, Bronx*

2018

# Openings of Affordable Housing with Supportive Set-Asides

## *Williamsbridge Gardens*

L+M/B&B Urban

Services: Center for Urban  
Community Services

- 170 units, individuals and families
  - 51 supportive units, families



*722 East 212 Street, Bronx*

2018

# Openings of Affordable Housing with Supportive Set-Asides

## *Packet Boat Landing*

### DePaul

- ❑ 60 units, individuals
  - ❑ 21 supportive units, individuals



*Elmwood Avenue, Lockport*

2018

# Openings of Affordable Housing with Supportive Set-Asides

*1880 Boston Road*

**Foxy Management**

**Services: Hebrew Home for  
the Aged at Riverdale**

- ❑ 167 units, individuals (seniors)
  - ❑ 51 supportive units, individuals



*1880 Boston Road, Bronx  
Photo credit: SLCE Architects*

2018

# Openings of Affordable Housing with Supportive Set-Asides

## *West Street Apartments*

## Rescue Mission of Utica

- 42 units, individuals
  - 17 supportive units, individuals



*West Street, Utica*

2018

# Openings of Affordable Housing with Supportive Set-Asides

*333 Lenox Road*

**Briarwood Organization**

**Services: Selfhelp  
Community Services**

- ❑ 54 units, individuals (seniors)
  - ❑ 9 supportive units, individuals



*333 Lenox Road, Brooklyn*

2018

# Openings of Affordable Housing with Supportive Set-Asides

## *2264 Morris Avenue*

Services for the  
Underserved/Bronx Pro

Services: Services for the  
Underserved

- ❑ 94 units, individuals and families
  - ❑ 31 supportive units, individuals



*2264 Morris Avenue, Bronx*

2018

# Openings of Affordable Housing with Supportive Set-Asides

*294 East 162nd Street*

Services for the  
UnderServed/L&M/B&B  
Urban

Services: Services for the  
UnderServed

- ❑ 126 units, individuals and families
  - ❑ 37 supportive units, families



*294 East 162nd Street, Bronx*

2018

# Openings of Affordable Housing with Supportive Set-Asides

*West Middle School Apts.*

**Unity House of Cayuga**

- ❑ 56 units, individuals
  - ❑ 15 supportive units, individuals



*Auburn, New York*

# Scattered Site Awards

## 2018

---

- ❑ NYC 15/15 - Scattered Site Contracts
  - ❑ Covenant House (30 units)
  - ❑ Catholic Guardian (30 units)
  - ❑ Bridging Access to Care (30 units)
  - ❑ Bailey House (30 units)
  - ❑ ICL (30 units)
  - ❑ New York Foundling (30 units)
  - ❑ Odyssey House (20 units)
  - ❑ Postgraduate Center for Mental Health (30 units)
  - ❑ St. Vincent's Heartshare (90 units)



# Scattered Site Awards ROS

## 2018

---

- ❑ **NYS OMH Scattered Site Awards**
  - ❑ **Behavioral Health Services North (2 units)**
  - ❑ **Living Opportunities of DePaul (43 units)**
  - ❑ **Oswego County Opportunities (65 units)**
  - ❑ **South Shore Association for Independent Living (30 units)**
  - ❑ **Southern Tier Environments for Living (10 units)**
  - ❑ **Salvation Army of the Syracuse Area (4 units)**

