

2013 Annual Meeting

March 6
Horticultural Society of
New York
New York City



theNetwork
Supportive Housing Network of NY



2012 Supportive Housing Openings

Association for Rehabilitative Case Management

55 units for individuals living with
mental illness

❑ Funding

Capital: OMH, DASNY, HCR LIHTC
(4%)

Operations/Services: OMH

❑ Architect

Trig and Li Architects

❑ Contractor

Aurora Contractors

❑ Syndicator

Richman Housing Resources



74 Avenue A: Queens

CAMBA

52 units: 32 formerly homeless and 20 low-income individuals

❑ Funding

Capital: HPD SHLP, NYC Council, NYSERDA, FHLB

Operations/ Services: DOHMH, Section 8

Pre-Development/ Acquisition: DB SHARE

❑ Architect

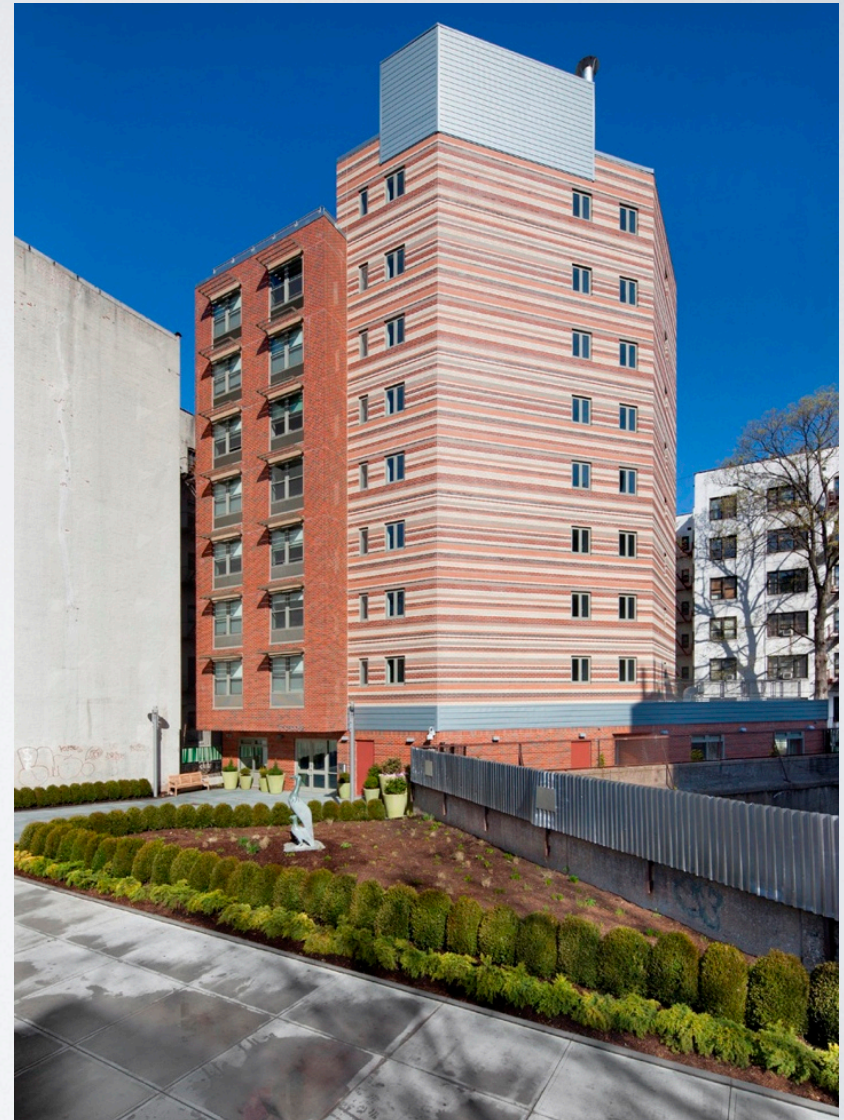
Dattner Architects

❑ Contractor

Galaxy General Contracting

❑ Syndicator

Enterprise



97 Crooke: Brooklyn

Center for Urban Community Services

92 units: 44 NY/NY III individuals, 11 NY/NY III families, 29 low-income individuals, 8 low-income families

❑ Funding

Capital: HPD SHLP & LIHTC, Enterprise, NYSERDA

Operations/ Services: DOHMH NY/NY III

Pre-Development/ Acquisition: DB SHARE, NYC Acquisition Fund

❑ Architect

Harden + Van Arnham Architects

❑ Contractor

Mega Contracting

❑ Syndicator

Enterprise



Lenniger Residences: Bronx

Common Ground Community



Eastman Commons: Rochester

80 units: 41 formerly homeless and 39 low-income individuals

❑ Funding

Capital: OTDA, HCR HTF & LIHTC, FHLB, City of Rochester, JP Morgan Chase

Operations/ Services: HUD S+C

❑ Architect

Bergman Associates

❑ Contractor

Norstar Building Corp.

❑ Syndicator

Goldman Sachs

❑ Services Provider

PathStone

Common Ground Community

161 units: 100 NY/NY III and 61 low-income individuals

❑ Funding

Capital: HCR HFA, HPD SHLP, OTDA, Tax Exempt Bonds, FHLB, HUD NSP

Operations/ Services: DOHMH NY/NY III, HRA NY/NY III, Section 8

❑ Architect

COOKFOX Architects

❑ Contractor

Mountco Construction & Development

❑ Syndicator

Hudson Housing Capital

❑ Bond Financier

Capital One

❑ Services Provider

Center for Urban Community Services



The Hegeman: Brooklyn

Community Access

64 units for NY/NY III individuals

❑ Funding

Capital: OMH, HCR LIHTC

Operations/ Services: OMH NY/NY III

Pre-Development/ Acquisition: DB SHARE

❑ Architect

SLCE Architects

❑ Contractor

Mega Contracting

❑ Syndicator

National Equity Fund



1710 Vyse Ave: Bronx

Concern for Independent Living



90 units: 60 NY/NY III individuals and 30 low-income families

❑ Funding

Capital: HCR LIHTC, CPC, OMH, OTDA, FHLB, NYSERDA

Operations/Services: OMH NY/NY III

❑ Architect

Dattner Architects

❑ Contractor

Mega Contracting

❑ Syndicator

National Equity Fund

Concern Heights Apartments: Brooklyn

East House Corp./ Providence Housing Development Corp.

45 units: 30 individuals
living with mental illness
and 15 low-income
individuals

❑ Funding

Capital: FHLB, OMH,
HCR LIHTC

Operations/ Services: OMH

❑ Architect

Pardi Partnership

❑ Contractor

Buckingham
Construction

❑ Syndicator

Enterprise



Paul Wolk Commons: Rochester

Federation of Organizations

50 units for individuals living with mental illness

❑ Funding

Capital: OMH, HCR LIHTC (4%)

Operations/Services: OMH

❑ Architect

Ting and Li Architects

❑ Contractor

Aurora Contractors

❑ Syndicator

Richman Housing Resources



Frank Padavan 6th Street Residence: Queens

Institute for Community Living

82 units: 60 NY/NY III individuals
and 22 NY/NY III youth

□ Funding

Capital: OMH, HCR LIHTC (4%)

Operations/ Services: OMH

□ Architect

Vassalotti Associates

□ Contractor

Artec Construction

□ Syndicator

Richman Housing Resources



Livonia: Brooklyn

JCTOD Outreach

8 units for formerly homeless women

❑ Funding

Capital: OTDA, Enterprise,
NYSERDA, HCR HOME

Operations/Services: HUD SHP, Oneida
County Dept. of Social Services,
United Way of Mohawk Valley

❑ Architect

C. Lewis Tomaselli Architects

❑ Contractor

Poncell Construction Company

❑ Syndicator

Enterprise



Johnson Park Apartments V: Utica

Jericho Project

76 units: 46 NY/NY III and 30 low-income individuals. All tenants are U.S. veterans.

■ Funding

Capital: HPD SHLP & LIHTC, Bronx Borough President

Operations/ Services: Section 8, HUD S+C, DOHMH NY/NY III

Pre-Development/ Acquisition: DB SHARE, NYC Acquisition Fund

■ Architect

OCV Architects

■ Contractor

Artec Construction

■ Syndicator

Richman Housing Resources



Kingsbridge Terrace: Bronx

Neighbors of Watertown



13 units: 11 formerly homeless individuals and 2 formerly homeless families

❑ Funding

Capital: OTDA

Operations/ Services: NYSSHP

❑ Architect

Crawford & Stearns Architects

❑ Contractor

Con-Tech Building Systems, Inc.

❑ Services Partner

CREDO Community Outreach
Center for Addiction

Music Center Apartments: Watertown

New Destiny Housing Corp.



The Anderson: Bronx

40 units: 6 domestic violence surviving individuals, 14 domestic violence surviving families, 9 low-income individuals, 11 low-income families

❑ Funding

Capital: OTDA, HCR HTF & LIHTC, FHLB, Bronx Borough President

Operations/Services: Section 8

❑ Architect

Magnusson Architects

❑ Contractor

Sisca Northeast, Inc.

❑ Syndicator

Boston Capital

Postgraduate Center for Mental Health

76 units: 51 formerly homeless individuals with special needs and 25 low-income individuals

❑ Funding

Capital: HPD SHLP & LIHTC, OTDA

Operations/ Services: Section 8, DOHMH

❑ Architect

Jonathan Kirschenfeld Architect

❑ Contractor

Artec Construction

❑ Syndicator

Hudson Housing Capital



Grand Concourse Residence: Bronx

Postgraduate Center for Mental Health

69 units: 25 NY/NY III individuals, 10 NY/NY III families, 25 formerly homeless individuals with special needs, 6 low-income individuals, 3 low-income families

❑ Funding

Capital: OTDA, OMH, HCR LIHTC

Operations/ Services: OMH NY/NY III, DOHMH NY/NY III

❑ Architect

Harden + Van Arnham Architects

❑ Contractor

Bruno Frustaci, Inc.

❑ Syndicator

Hudson Housing Capital



Hull Avenue Residence: Bronx

Pratt Area Community Council

97 units: 59 NY/NY III and 38 low-income individuals

❑ Developer

Dunn Development Corporation

❑ Funding

Capital: HPD SHLP & LIHTC, Brooklyn Borough President, NYSERDA

Operations/Services: DOHMH NY/NY III, Section 8

❑ Architect

Architecture In Formation

❑ Contractor

Mega Contracting

❑ Syndicator

Enterprise

❑ Services Partner

Brooklyn Community Housing and Services



Navy Green: Brooklyn

Southern Tier Environments for Living

33 units: 25 individuals living with
mental illness and 8 low-income
individuals

❑ Funding

Capital: HCR LIHTC, OMH

Operations/Services: OMH NY/NY III

❑ Architect

Newman Design Group

❑ Contractor

HLS Builders

❑ Syndicator

National Equity Fund

❑ Services Partner

PSCH



Dewitt Supportive Housing: Brooklyn

Transitional Services for New York

52 units for individuals living with
mental illness

❑ Funding

Capital: OMH, HCR LIHTC (4%)

Operations/Services: OMH

❑ Architect

Ting + Li Architects

❑ Contractor

Aurora Contracting

❑ Syndicator

Richman Housing Resources



Hazel House: Queens

Urban Pathways

50 units for NY/NY III individuals

❑ Funding

Capital: OMH, HCR LIHTC

Operations/ Services: OMH NY/NY III

Pre-Development/ Acquisition: DB SHARE

❑ Architect

GranKriegel Associates

❑ Contractor

Mega Construction

❑ Syndicator

Richman Housing Resources



Halletts Cove House: Queens

2012 Affordable Residences with Supportive Housing Units



Dunn Development Corp./CAMBA

64 units: 30 NY/NY III individuals and 34 low-income families

❑ Funding

Capital: HPD SHLP & LIHTC, Bank Loan

Operations/ Services: HRA NY/NY III

❑ Architect

SLCE Architects

❑ Contractor

Artec Construction



2081 Madison Ave: Manhattan

Housing Visions Consultants

30 units: 9 families surviving crisis and
21 low-income families

❑ Funding

Capital: HCR HTF & LIHTC,
OTDA, City of Lockport

Operations/ Services: YWCA of Niagara

❑ Architect

Passero Associates

❑ Contractor

Housing Visions Construction

❑ Syndicator

Enterprise



Lockport Canal Homes: Lockport

Lantern Group

34 units for low-income individuals. Units to become supportive through attrition.

- ❑ **Funding**

Capital: HPD SHLP & LIHTC

- ❑ **Architect**

OCV Architects

- ❑ **Contractor**

Bruno Frustaci Contracting

- ❑ **Syndicator**

Richman Housing Resources



Bilander Hall: Manhattan

Southern Tier Environments for Living

35 units: 10 individuals with mental illness, 1 family with mental illness, 24 low-income families

❑ Funding

Capital: HCR HOME & LIHTC, OMH

Operations/Services: OMH

❑ Architect

Carmina Wood Morris

❑ Contractor

R&P Oak Hill

❑ Syndicator

Richman Housing Resources

❑ Services Partner

CODE, Inc.



New Apple Yard Terrace Apartments: Jamestown

2012 Scattered-Site Supportive Housing Unit Openings

BASICS: 15

Central New York Health Systems Agency: 10

Chautauqua Opportunities: 11

Community Health Action of Staten Island: 40

Housing Plus Solutions: 10

Odyssey House: 20

Palladia: 10

Unity House of Troy: 13

Women in Need: 20

Statewide total: 149 units





2012 totals:
24 new residences
1,597 new units



The Network in review:

- **217** nonprofit members
- **38** affiliate members
- **78** corporate members
- **2012: Largest conference, gala, advocacy day in Network history**

