



One-Stop Financing Solutions for
Multifamily Housing Developers.

The Community Preservation Corporation

Quantifying Energy Usage in Existing Multifamily Buildings

F.L. Andrew Padian, VP for Energy Initiatives

The Community Preservation Corporation

28 E 28th Street

New York, NY 10016

212.869.5300 x620

www.communityp.com

apadian@communityp.com

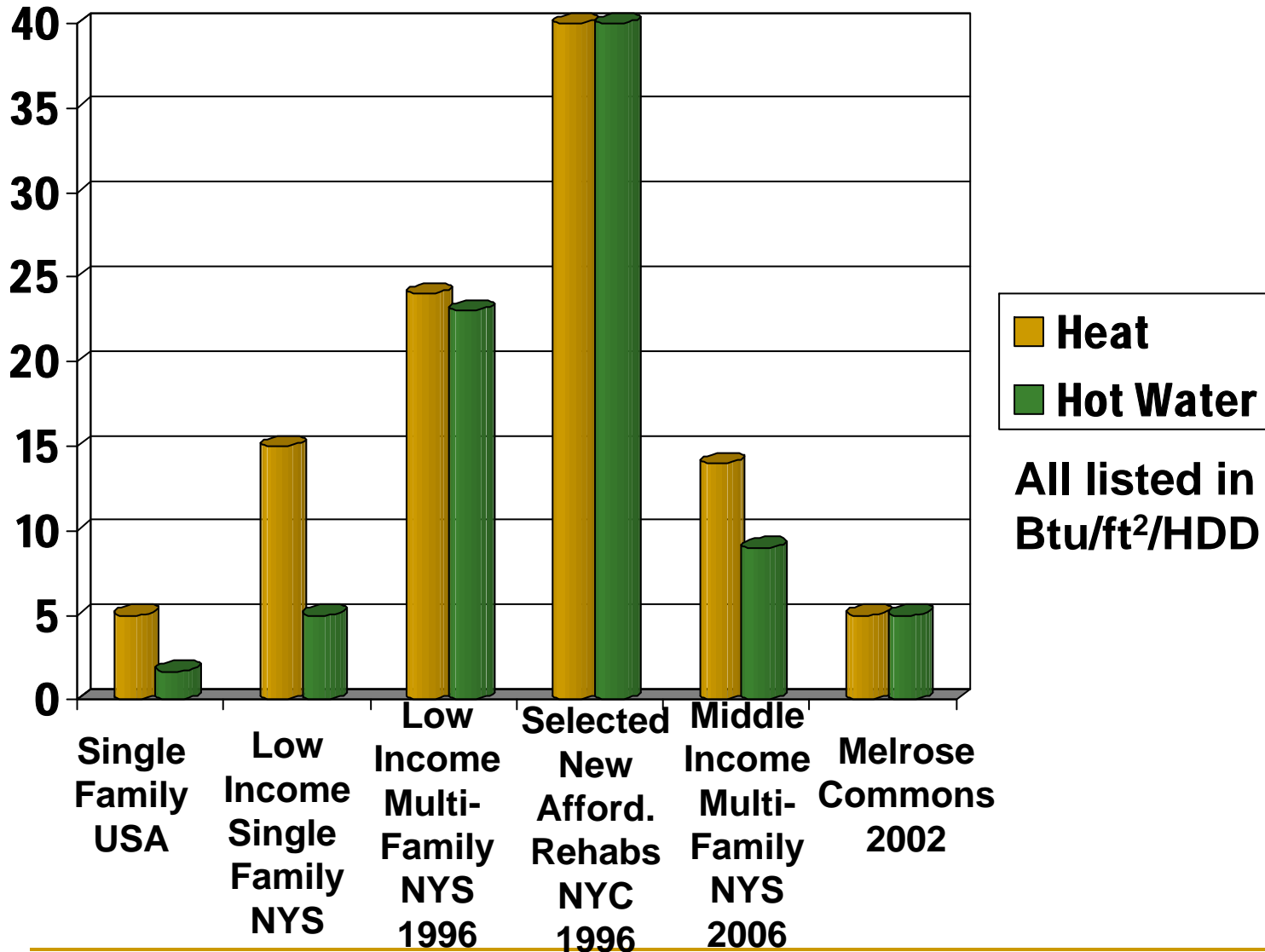
© The Community Preservation Corporation 2009



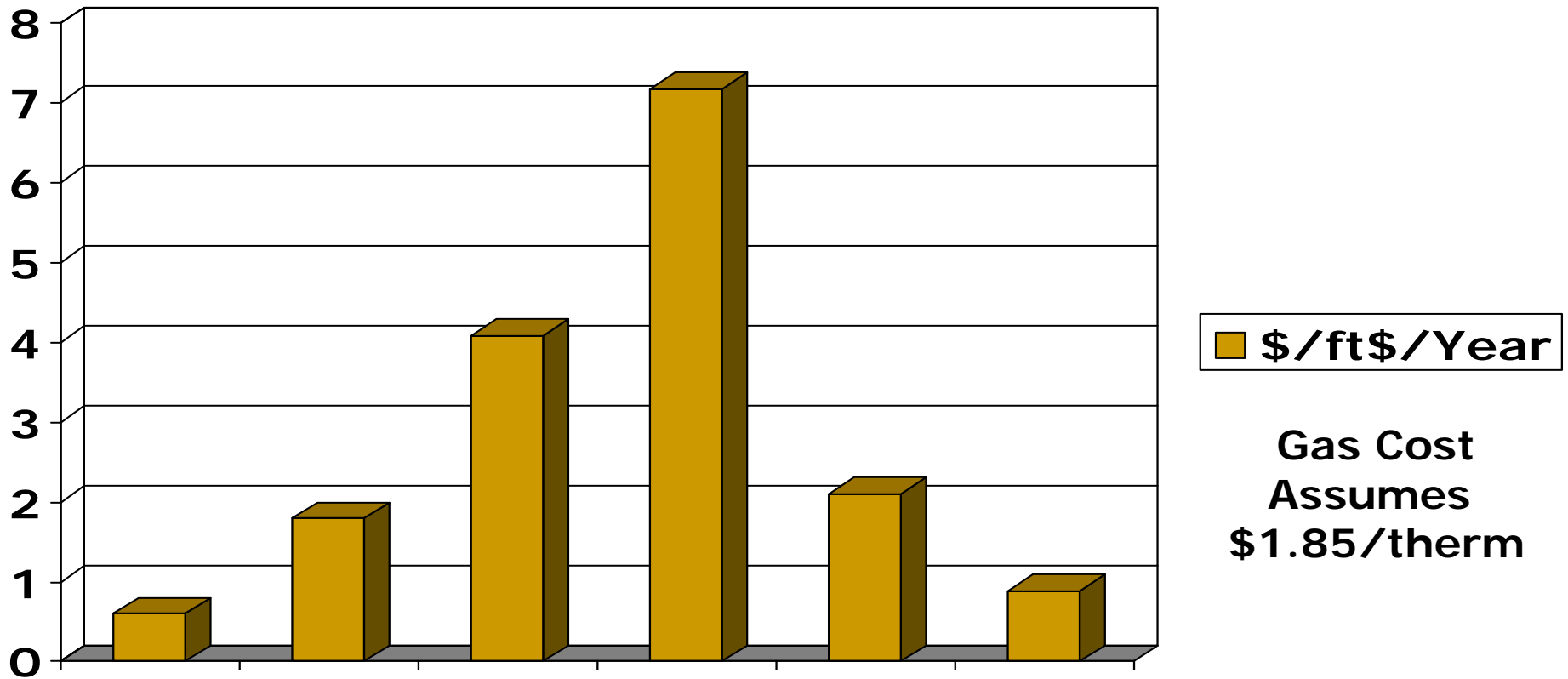
The Seven-to-One Problem in Multifamily



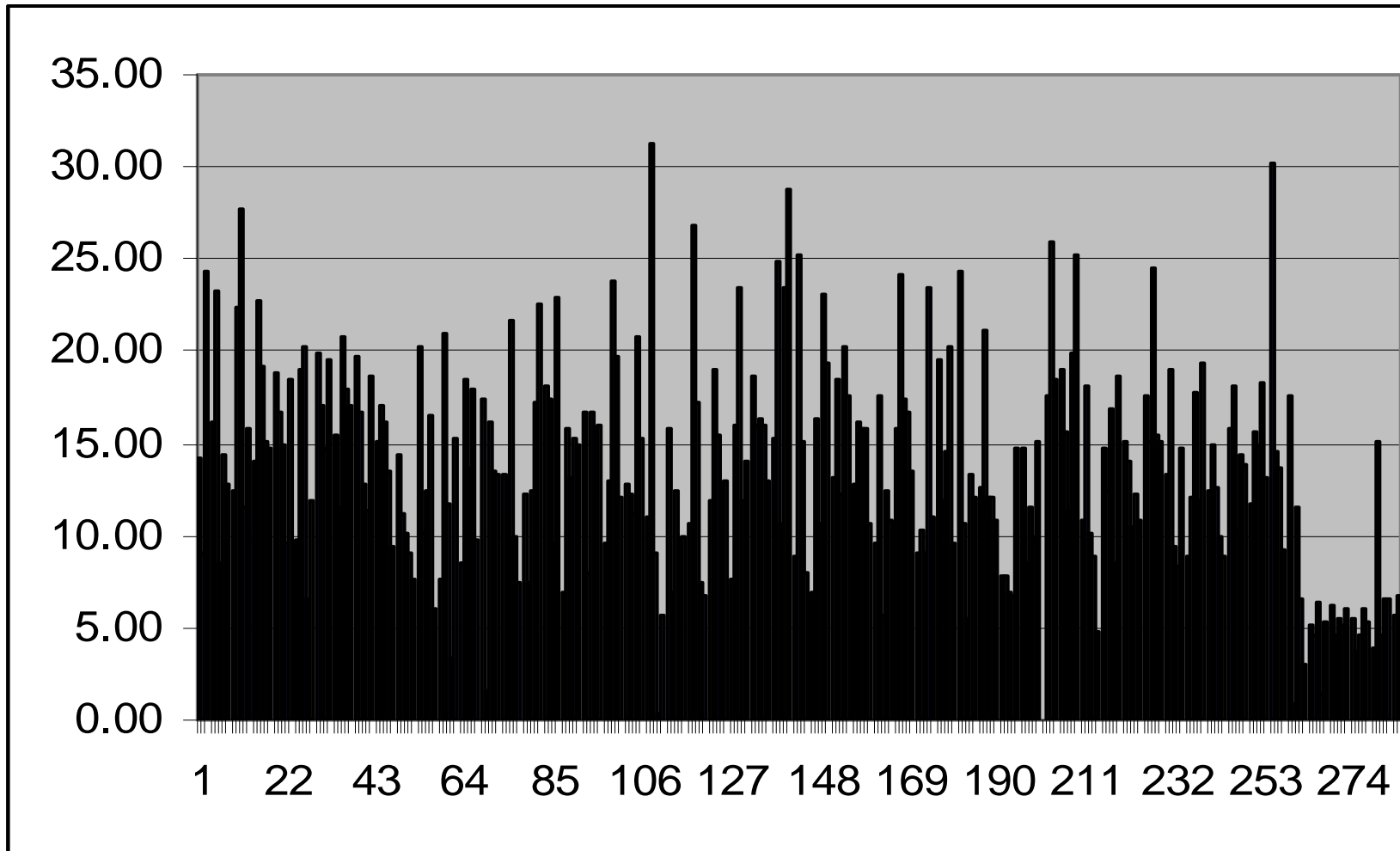
Range of Energy Usage in Buildings



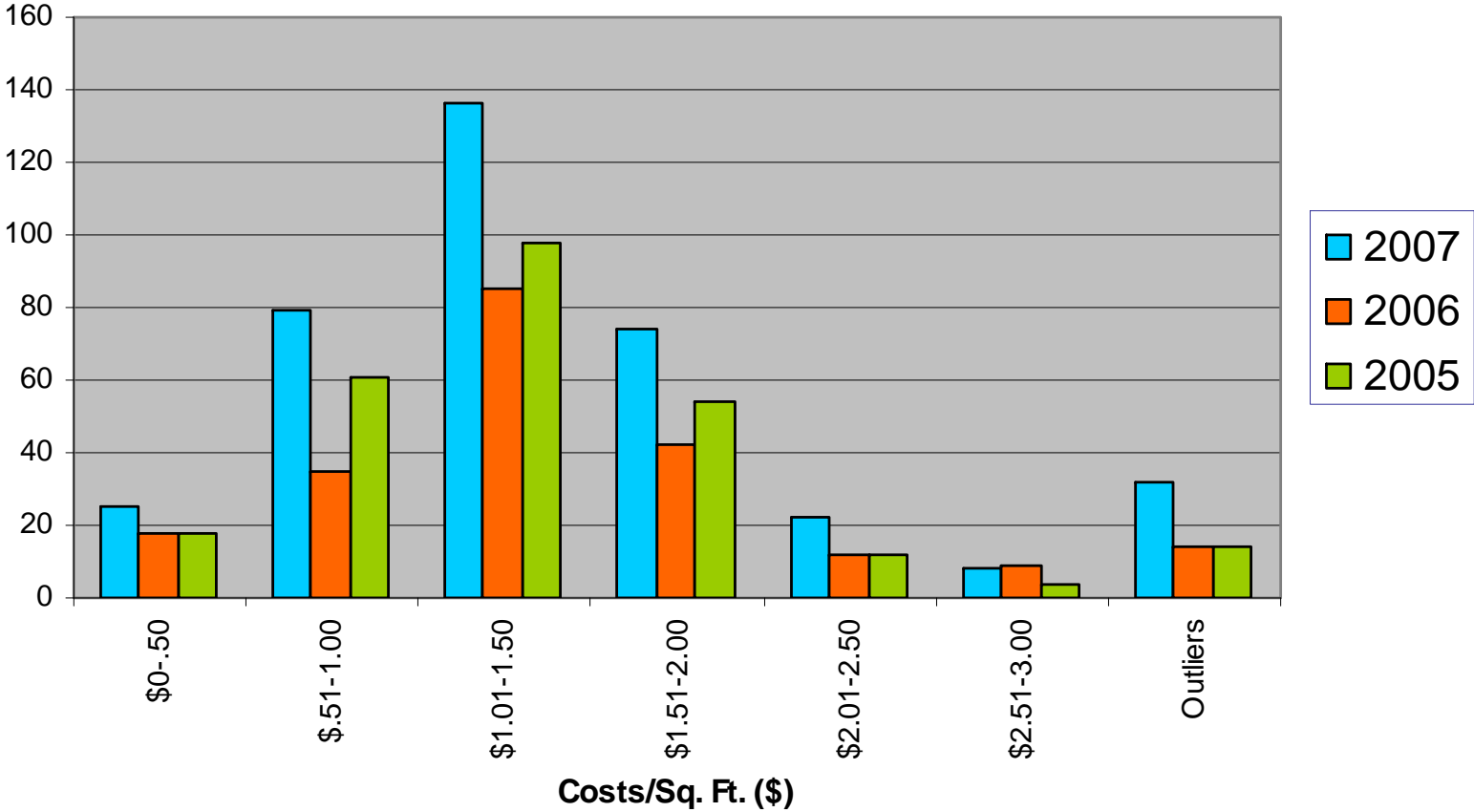
The same buildings, in cost/ft²



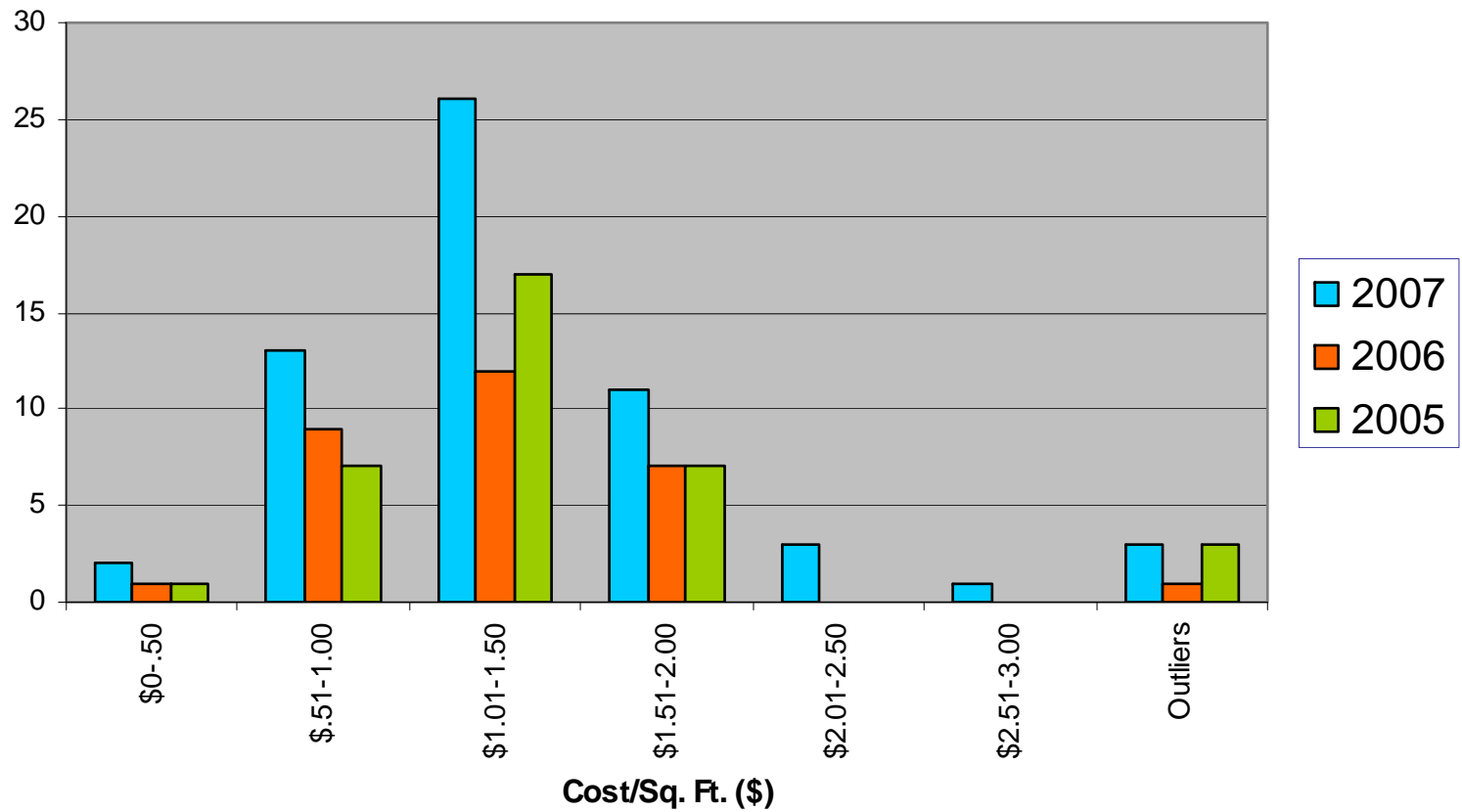
Almost 300 NYS Buildings requesting Energy Audits 2001-2005 (BTU/ft²/HDD)



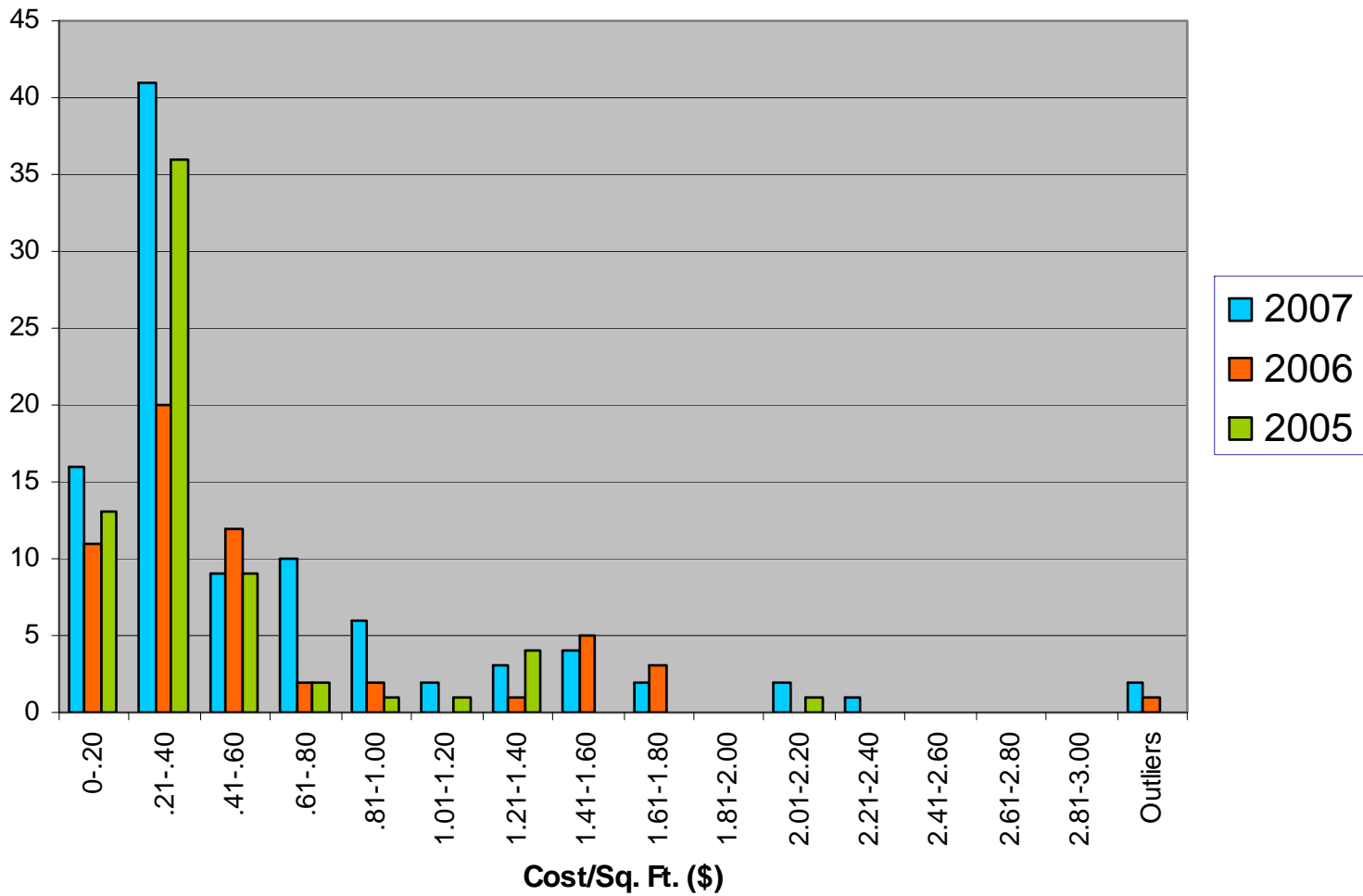
CPC Buildings- Fuel/Gas Costs Per Sq. Ft.



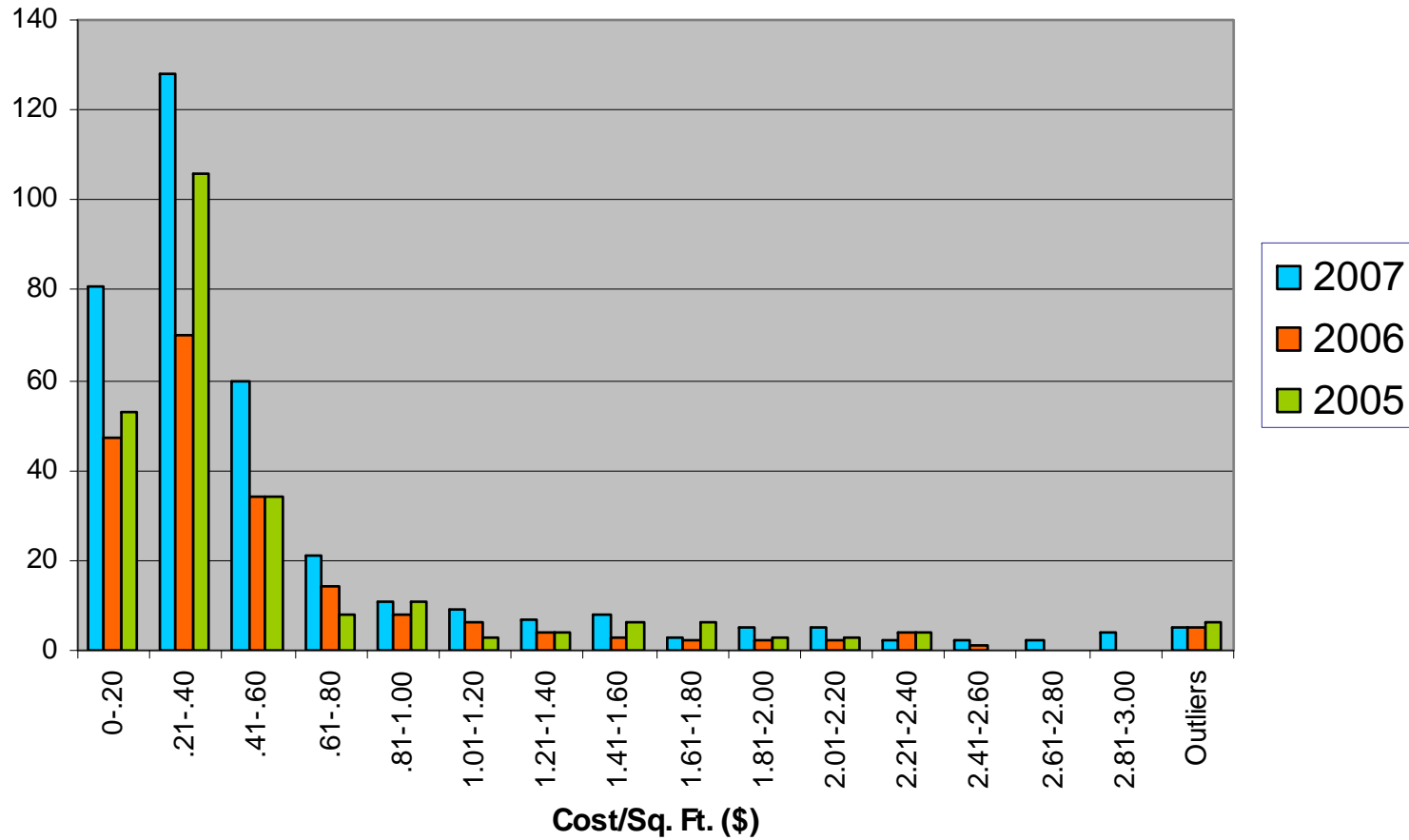
CPC Buildings- Fuel (#2, #4 & #6) Costs Per Sq. Ft.



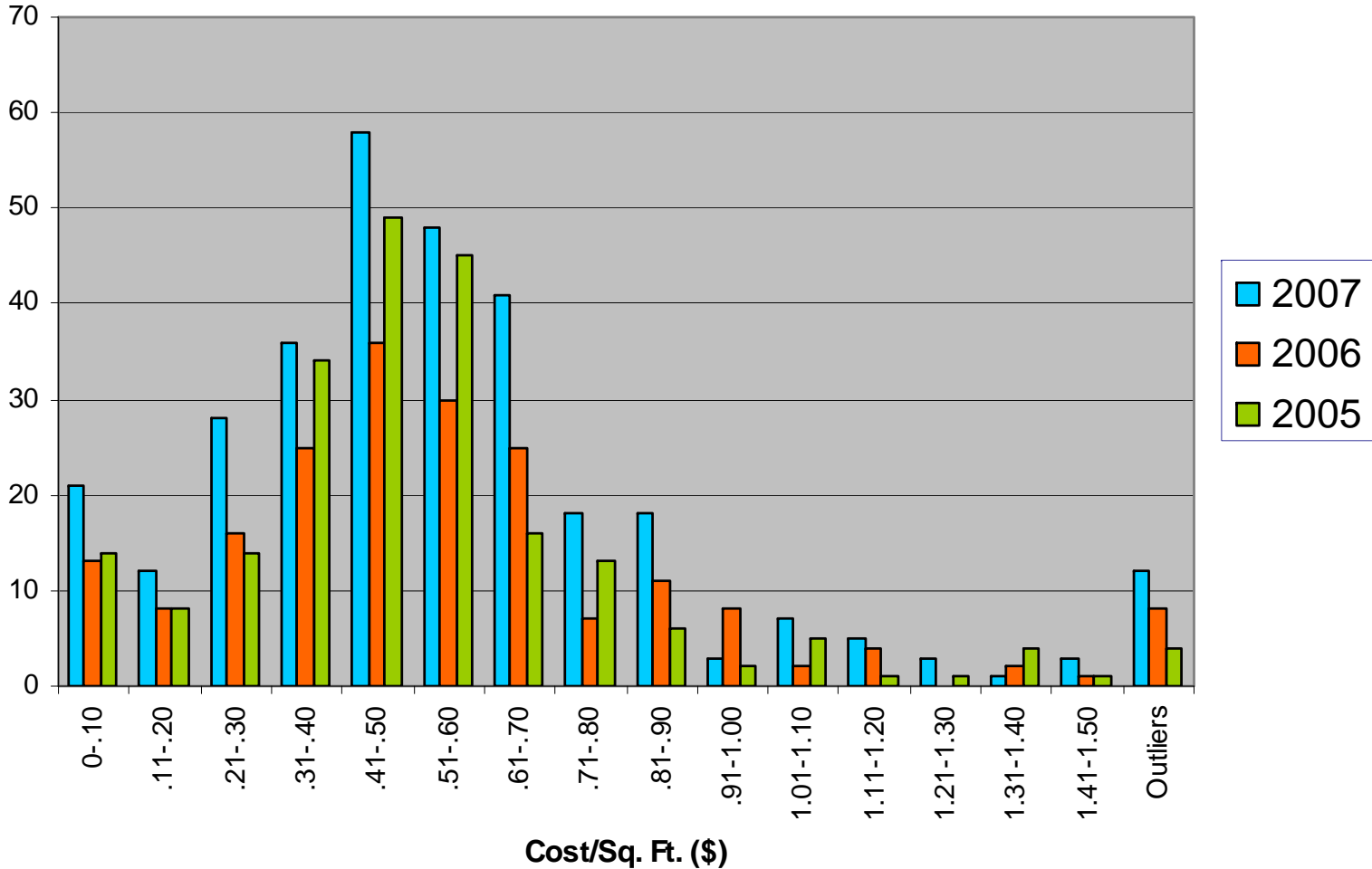
CPC Buildings-Electric (Elevator) Costs Per Sq. Ft.



CPC Buildings- Electric (Walkup) Costs Per Sq. Ft.



CPC Buildings- Water & Sewer Cost Per Sq. Ft.



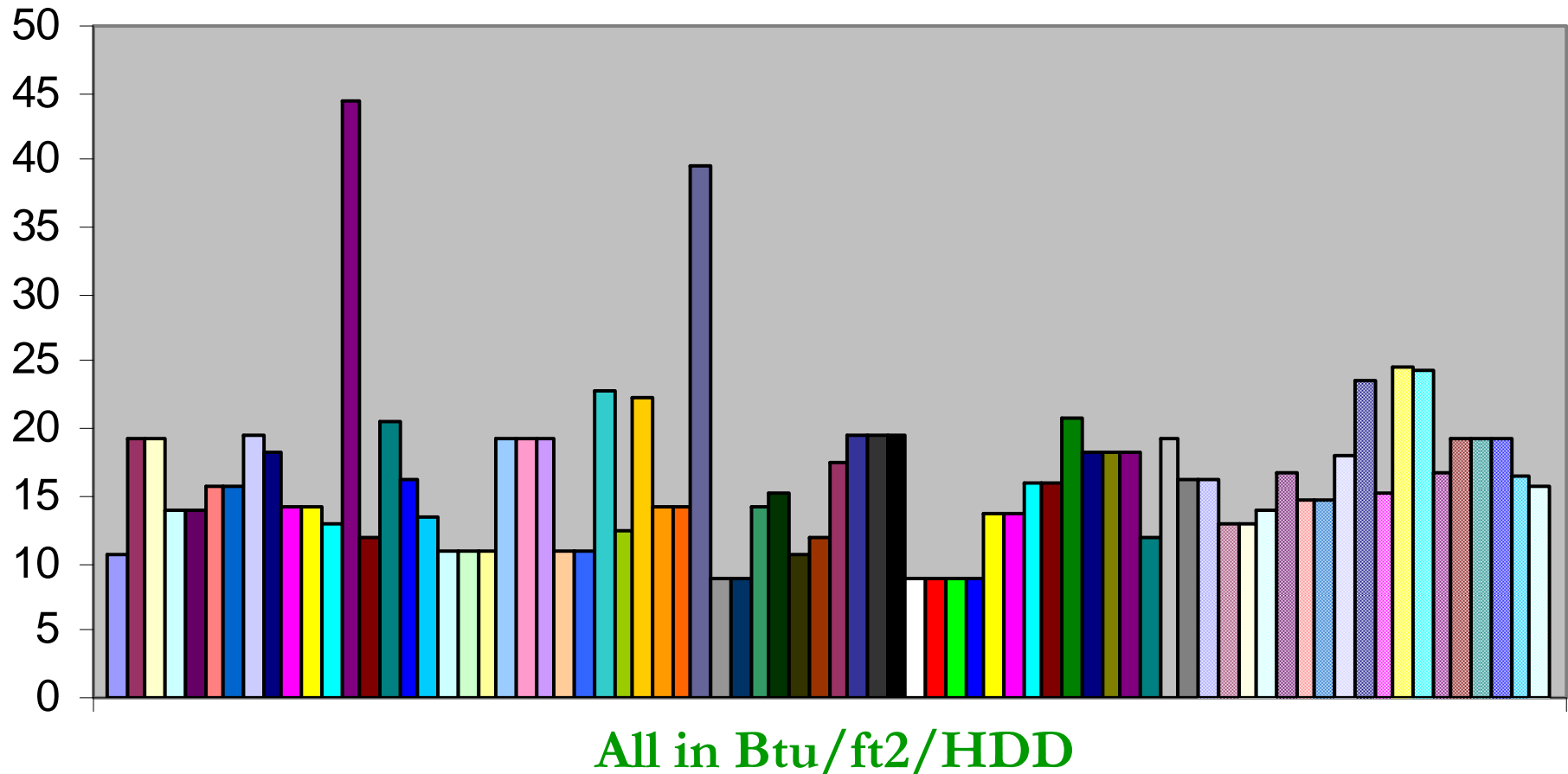
Boston Property Maintenance Costs

	Low	Mean	High
Water and sewer	\$117	\$516	\$977*
Pest control	\$32	\$75	\$156
Painting	\$13	\$72	\$189
Landscaping	\$0	\$72	\$187
Appliances	\$0	\$22	\$79
Cabinets - Maintenance	\$0	\$34	\$83
Cleaning supplies	\$2	\$33	\$65
Lighting fixtures and bulbs	\$6	\$17	\$38
Ovens and ranges	\$0	\$15	\$26
Windows	\$0	\$5	\$26
Lighting – Fixtures only	\$0	\$9	\$18
Kitchen and bath fans	\$0	\$9	\$2
Lighting - Bulbs only	\$0	\$3	\$6

* High costs are due to an unnoticed water usage with an outside hose.



A Top 10 Owner of NYC Properties: Multifamily Energy Usage



(\$/ft²/Year)

