

Supporting Staff:  
Examples from Lutheran  
Social Services of New York





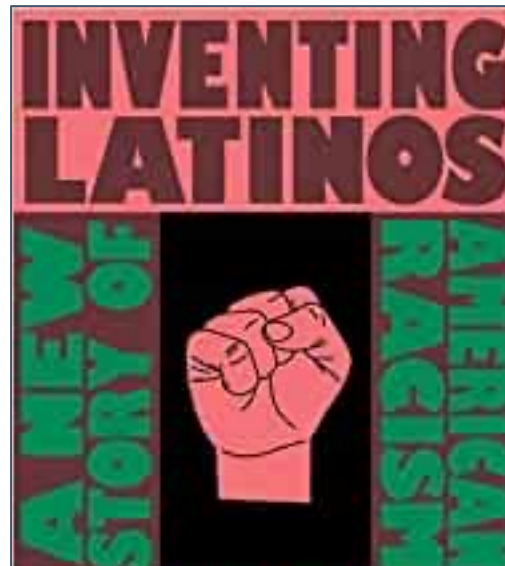
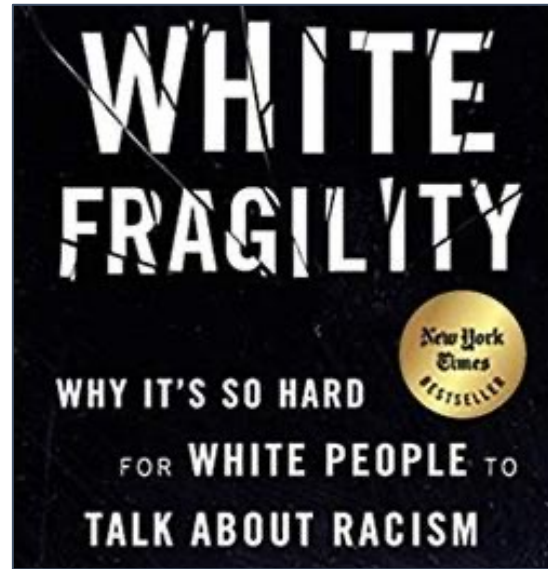
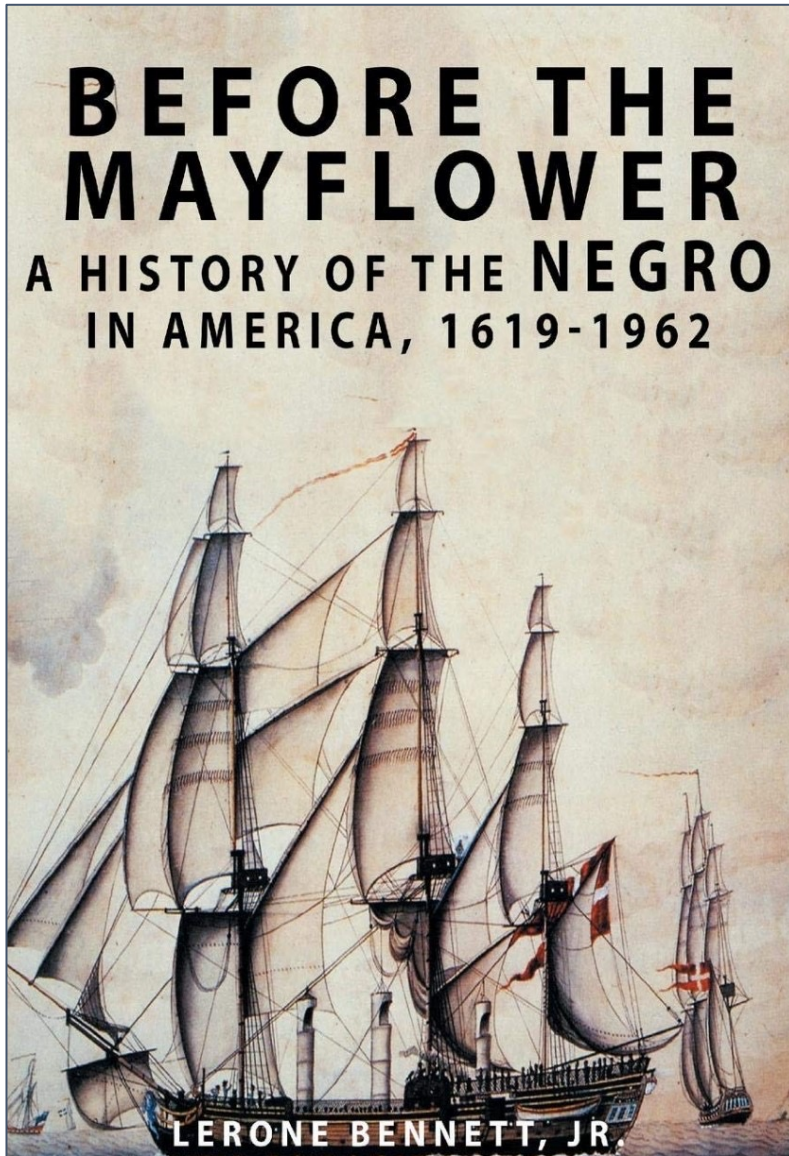
“We transform communities by collaborating with individuals, families and leaders to dismantle the causes and effects of persistent poverty and social injustice.”



Human services contract workforce employs 75% workers of color.\*

\*Src: Center for New York City Affairs, [The Case for Ending Poverty Wages for New York City's Human Services Workers](#), March 2022

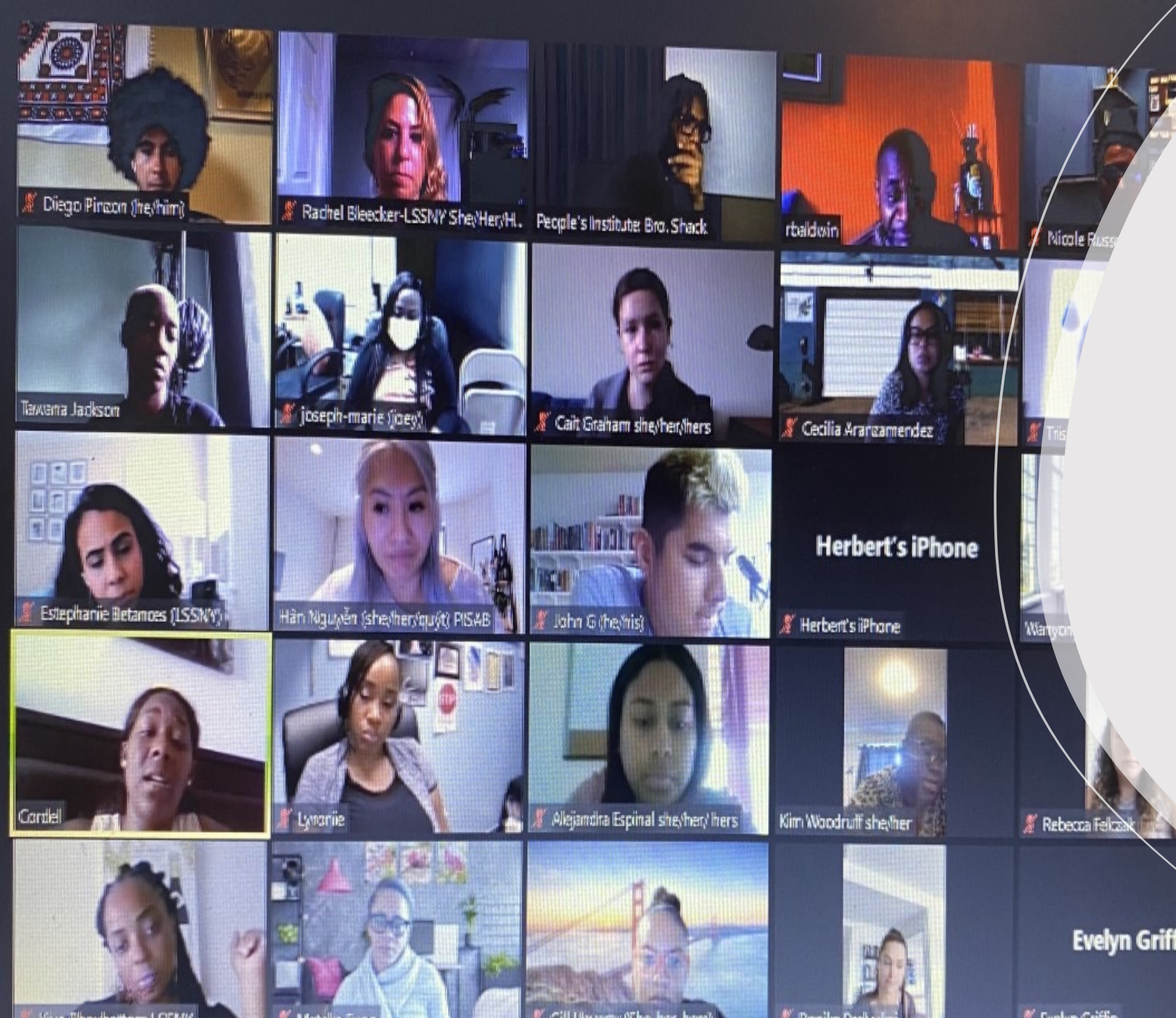
- Social Justice Book Club



- Civic Engagement Committee



is **not** registered to vote.  
are you one of them?



- Undoing Racism & Community Organizing training (PISAB)
- RELISH program at Hunter College (RESH)
- Anti-Oppressive Leadership Fellows program (Center for Nonprofit Leadership at Adelphi)

Diego Pinzon (he/him)

Rachel Bleecker-LSSNY She/Her/Hers

People's Institute Bro. Shack

rbaldwin

Nicole Russ

Tawana Jackson

Joseph-Marie (she)

Cait Graham she/her/hers

Cecilia Aranzamendez

Tris

Estephannie Betamoes (LSSNY)

Hàn Nguyễn (she/her/quy) PISAB

John G (he/his)

Herbert's iPhone

Wanyou

Corleil

Lynnie

Alejandra Espinal she/her/hers

Kim Woodruff she/her

Rebecca Felczak

Miss Elizabeth LSSNY

Michelle

Chilika

Daniel

Evelyn Griffin

# COVID-19



- Encouraging Higher Education & SIFI-certified Staff
- Cultivating Leadership
- Cross-pollinating/
- Eliminating Silos
- Quasi-mentorship



**The best leaders are  
passionate about  
developing emerging  
LEADERS, because  
true leaders don't  
create more  
followers, they create  
more LEADERS.**



- Staff Inclusion
- Senior Leadership Check Ins
- Highlighting Staff

- Compassion Days
  - EAP
  - Trainings





# Partnerships ...and SWAG!!!





# Staff Appreciation and Celebrations



# Holistic Services



# Good Job - Alicia Keys

**CNN GLOBAL TOWN HALL**

**ALICIA KEYS ON NEW SONG, UNSUNG HEROES OF PANDEMIC**

A **CNN** GLOBAL TOWN HALL

**CORONAVIRUS FACTS AND FEARS**

**LIVE**

**CNN**

AC360°