

# 2024 Annual Meeting

March 7, 2024



the Network  
Supportive Housing Network of NY

# 2023 Supportive Housing Openings



# Bethesda House of Schenectady

## Cara House



*917 State Street, Schenectady*

- ❑ 37 units, individuals
  - ❑ 26 supportive units
- ❑ Funding
  - ❑ *Capital:* OTDA HHAP
  - ❑ *Operations/ Services:* ESSHI OTDA
- ❑ Architect
  - ❑ Stracher Roth Gilmore Architects (SRG)
- ❑ Contractor
  - ❑ Sano Rubin

# Catholic Charities of Onondaga County

## HSC Apartments



*146 Devine Street, Syracuse*

- ❑ 8 units, individuals
  - ❑ 8 supportive units
- ❑ Funding
  - ❑ *Capital:* OTDA
  - ❑ *Operations/ Services:* OTDA  
ESSHI
- ❑ Architect
  - ❑ Holmes, King, Kallquist & Associates, Architects
- ❑ Contractor
  - ❑ Rich & Gardner Construction Co.

# Catholic Homes

## St. Philip Neri



*3054 & 3069 Villa Avenue, Bronx*

- ❑ 186 units, individuals & families
  - ❑ 93 supportive units
- ❑ Funding
  - ❑ *Capital:* HFA, HCR
  - ❑ *Operations/ Services:* OMH  
ESSHI
- ❑ Architect
  - ❑ Think! Architects
- ❑ Contractor
  - ❑ Galaxy Construction
- ❑ Syndicator
  - ❑ CREA

# Center for Urban Community Services

## Williamsbridge Gardens II



- ❑ 169 units, individuals & families
  - ❑ 85 supportive units, individuals
- ❑ Funding
  - ❑ *Capital:* HFA, HCR, HPD
  - ❑ *Operations/ Services:* NYC 15/15
- ❑ Architect
  - ❑ MHG Partners
- ❑ Contractor
  - ❑ L&M Development Partners
- ❑ Syndicator
  - ❑ Raymond James

*713 E 211th St & 718 E 212th St, Bronx*

# Community Access River Avenue



*1159 River Avenue, Bronx*

- ❑ 245 units, individuals and families
  - ❑ 148 supportive units
- ❑ Funding
  - ❑ *Capital:* HPD, HDC, HCR, Wells Fargo
  - ❑ *Operations/ Services:* OMH ESSHI
- ❑ Architect
  - ❑ Urban Quotient, Aufgang Architects
- ❑ Contractor
  - ❑ Joy Construction

# Concern Housing St. James Terrace



- ❑ 101 units, individuals
  - ❑ 51 supportive units
- ❑ Funding
  - ❑ *Capital:* HFA, OTDA
  - ❑ *Operations/Services:* OMH ESSHI
- ❑ Architect
  - ❑ Dattner Architects
- ❑ Contractor
  - ❑ Mega Contracting

*2500 Jerome Avenue, Bronx*



# Concern Housing Concern Pitkin



Photo: Chris Cooper

*410 Warwick Street, Brooklyn*

- ❑ 57 units, individuals
  - ❑ 35 supportive units
- ❑ Funding
  - ❑ *Capital:* HPD , OTDA
  - ❑ *Operations/Services:* NYC 15/15
- ❑ Architect
  - ❑ Urban Architectural Initiatives
- ❑ Contractor
  - ❑ Penta Group
- ❑ Syndicator
  - ❑ Hudson Housing

# DePaul Holland Circle



*160 Holland Circle Drive, Montgomery*

- ❑ 48 units, individuals & families
  - ❑ 27 supportive units, individuals
- ❑ Funding
  - ❑ *Capital:* CPC, HCR, OMH
  - ❑ *Operations/Services:* OMH
- ❑ Architect
  - ❑ SWBR Architects
- ❑ Contractor
  - ❑ Christa Construction

# DePaul

## Charles J. Lesh MD Apartments



*555 E. Main Street, Batavia*

- ❑ 20 units, individuals
  - ❑ 20 supportive units
- ❑ Funding
  - ❑ *Capital:* OTDA
  - ❑ *Operations/ Services:* OMH ESSHI
- ❑ Architect
  - ❑ SWBR Architects
- ❑ Contractor
  - ❑ Whitney East

# DePaul

## Veddersburg Apartments

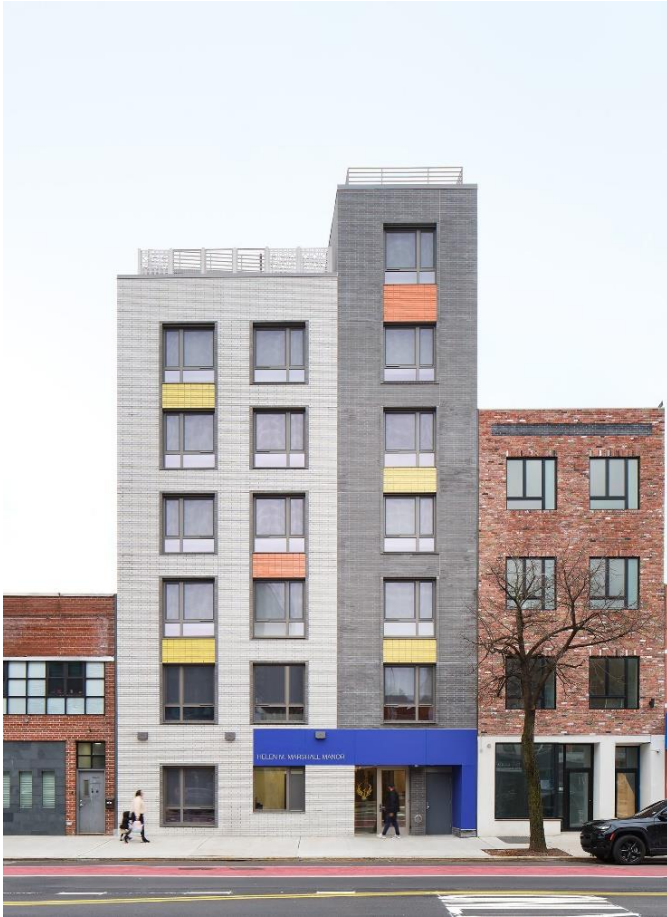


*251 East Main Street, Amsterdam*

- ❑ 62 units, families
  - ❑ 31 supportive units
- ❑ Funding
  - ❑ *Capital:* CPC, HCR
  - ❑ *Operations/ Services:* OMH ESSHI
- ❑ Architect
  - ❑ SWBR Architects
- ❑ Contractor
  - ❑ Christa Construction

# Elmcor

## Northern Boulevard



*107-20 Northern Boulevard, Queens*

- ❑ 30 units, individuals
  - ❑ 21 supportive units
- ❑ Funding
  - ❑ *Capital:* HPD, Reso A
  - ❑ *Operations/Services:* NYC 15/15
- ❑ Architect
  - ❑ Monica Lopez
- ❑ Contractor
  - ❑ The Penta Group

# Federation of Organizations

## Barbara Faron Apartments



Photo: Chris Cooper

*20-50 Nameoike Avenue, Queens*

- ❑ 117 units, individuals & families
  - ❑ 71 supportive units, individuals
- ❑ Funding
  - ❑ *Capital:* HPD, CSH
  - ❑ *Operations/Services:* NYC 15/15
- ❑ Architect
  - ❑ Urban Architectural Initiatives
- ❑ Contractor
  - ❑ Mega Contracting
- ❑ Syndicator
  - ❑ Richman Group

# Greater Opportunities for Broome and Chenago City of Binghamton



- ❑ 27 units, individuals & families
  - ❑ 27 supportive units
- ❑ Funding
  - ❑ *Capital*: OTDA
  - ❑ *Operations/ Services*: OTDA ESSHI
- ❑ Architect
  - ❑ PAEvery Architects
- ❑ Contractor
  - ❑ W.L. Kline Construction

*2 Way Street, 22 Moffatt Ave,  
39-49 Munsell Street, 4 Sturges Ave*

# HELP USA/HELPDevCo

## HELP ONE Building A



*273 Snediker Avenue, Brooklyn*

- ❑ 183 units, individuals & families
  - ❑ 111 supportive units, families
- ❑ Funding
  - ❑ *Capital:* HPD, HDC, OTDA
  - ❑ *Operations/Services:* NYC 15/15
- ❑ Architect
  - ❑ Curtis & Ginsberg Architects
- ❑ Contractor
  - ❑ Monadnock Construction
- ❑ Syndicator
  - ❑ Regions



# HELP USA/HELPDevCo

## HELP ONE Building B



*282 Hinsdale Street, Brooklyn*

- ❑ 70 units, individuals
  - ❑ 43 supportive units
- ❑ Funding
  - ❑ *Capital:* HPD, OTDA
  - ❑ *Operations/ Services:* NYC 15/15
- ❑ Architect
  - ❑ Curtis & Ginsberg Architects
- ❑ Contractor
  - ❑ Monadnock Construction
- ❑ Syndicator
  - ❑ Regions

# HELP USA/HELPDevCo

## Home Simpson



Photo: Chris Cooper

*1210 Simpson Street, Bronx*

- ❑ 71 units, individuals & families
  - ❑ 44 supportive units
- ❑ Funding
  - ❑ *Capital:* HPD, HCR
  - ❑ *Operations/Services:* NYC 15/15
- ❑ Architect
  - ❑ Urban Architectural Initiatives
- ❑ Contractor
  - ❑ Apex Builders Company
- ❑ Syndicator
  - ❑ Raymond James

# Homeward NYC

## Homeward Central Harlem



@ Albert Vecerka / Esto

*15 West 118<sup>th</sup> Street, Manhattan*

- ❑ 50 units, individuals
  - ❑ 50 supportive units
- ❑ Funding
  - ❑ *Capital:* HPD, HCR, Key Bank
  - ❑ *Operations/Services:* NYC 15/15
- ❑ Architect
  - ❑ Kossar and Garry Architects
- ❑ Contractor
  - ❑ Cheever Development Corporation
- ❑ Syndicator
  - ❑ Hudson Housing

# Project Hospitality

## 1546 Castleton



*1546 Castleton, Staten Island*

- ❑ 50 units, individuals
  - ❑ 31 supportive units
- ❑ Funding
  - ❑ *Capital:* HPD
  - ❑ *Operations/ Services:* NYC 15/15
- ❑ Architect
  - ❑ Amie Gross Architects
- ❑ Contractor
  - ❑ Broadway Builders

# Project Renewal

## Bedford Green House



*2865 Creston Avenue, Bronx*

- ❑ 118 units, individuals & families
  - ❑ 71 supportive units, individuals & families
- ❑ Funding
  - ❑ *Capital:* HPD, HDC, OTDA, Deutsche Bank
  - ❑ *Operations/Services:* NY/NY III, NYC 15/15
- ❑ Architect
  - ❑ ESKW Architects
- ❑ Contractor
  - ❑ Bruno Frustaci Contracting
- ❑ Syndicator
  - ❑ Bank of America

# Services for the UnderServed

## Melrose North



*341 East 162<sup>nd</sup> Street, Bronx*

- ❑ 172 units, individuals & families
  - ❑ 104 supportive units, individuals & families
- ❑ Funding
  - ❑ *Capital:* HPD, HDC, FHLB, CSH
  - ❑ *Operations/Services:* OTDA ESSHI; NYC 15/15
- ❑ Architect
  - ❑ Curtis & Ginsberg Architects
- ❑ Contractor
  - ❑ Home Builders
- ❑ Syndicator
  - ❑ Enterprise

**2023**

**Affordable Housing with  
Supportive Units**



2023

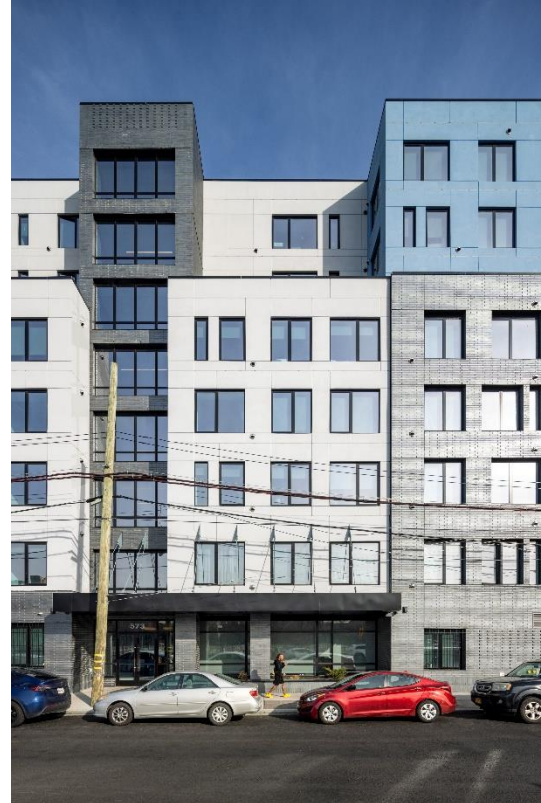
## Affordable Housing with Supportive Units

### *Linden Terrace II*

**Radson  
Development**

**Services: The  
Bridge**

- ❑ 160 units, families and individuals
  - ❑ 30 supportive units



*573 Emerald Street, Brooklyn*



2023

## Affordable Housing with Supportive Units

### *Linden Terrace III*

**Radson  
Development**

**Services: The  
Bridge**

- 156 units, individuals
  - 30 supportive units



*783 Emerald Place, Brooklyn*

2023

## Affordable Housing with Supportive Set-Asides

*Betances VI/NYCHA*  
*Next Gen*

Lemle & Wolff  
Alembic Community  
Development

Services: The Bridge

- 101 units, individuals
  - 30 supportive units



*472 Willis Avenue, Bronx*

2023

## Affordable Housing with Supportive Units

*Bronx Point A*

**L&M**

**Services: BronxWorks**

- ❑ 541 units, individuals & families
- ❑ 82 supportive units, individuals & families



*575 Exterior Street, Bronx*

2023

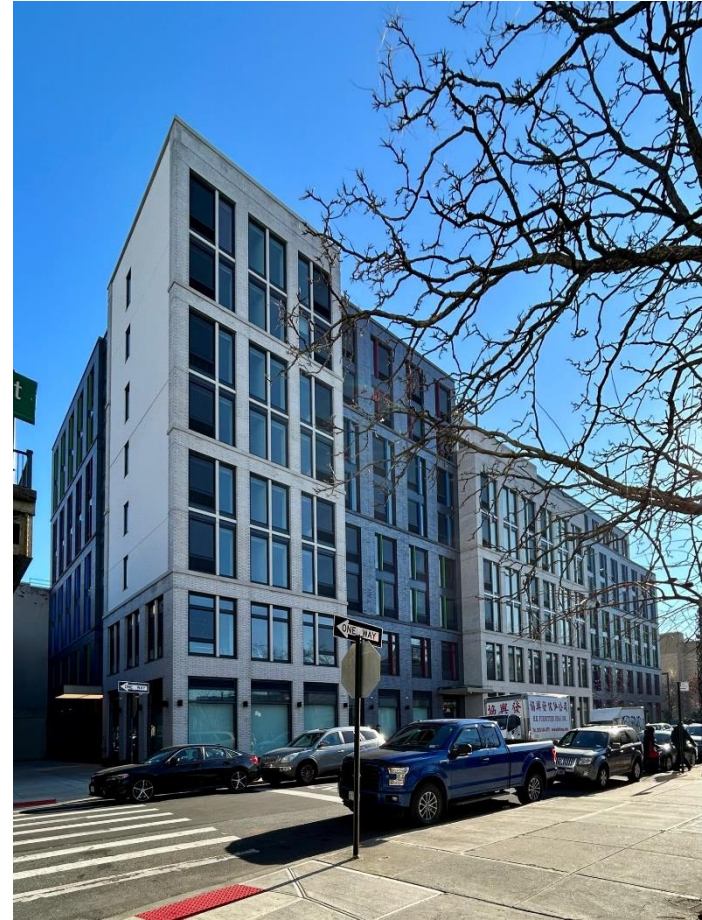
## Affordable Housing with Supportive Units

*Simba Simbi*

**Dunn Development Corp.  
Fish Plate Development**

**Services: CAMBA**

- ❑ 156 units, individuals
- ❑ 48 supportive units



*381-401 Chester Street, Brooklyn*

2023

## Affordable Housing with Supportive Units

*Port Byron*

**DePaul**

- ❑ 69 units, individuals & families
  - ❑ 30 supportive units, individuals



*27 Church Street, Port Byron*

2023

## Affordable Housing with Supportive Units

### *Fulton Friendship House*

#### Helio Health

- ❑ 64 units, individuals
  - ❑ 22 supportive units



*507 North Perry Street, Johnstown*

2023

## Affordable Housing with Supportive Set-Asides



*169 Lander Street, Newburgh*

*East End II*

**RUPCO, Inc.**

- ❑ 51 units, individuals & families
  - ❑ 10 supportive units

2023

## Affordable Housing with Supportive Units



*The Allen and Geraldine  
Rosenberg Residence*

**Selfhelp Realty Group**

**Services: Selfhelp**

- ❑ 44 units, families
  - ❑ 14 supportive units

*81 South Bergen Place, Freeport*



2023

## Affordable Housing with Supportive Units



*140 Hodge Avenue, Buffalo*

*Folwell Apartments*

**People Inc.**

**Services: Volunteers  
of America of  
Upstate NY**

- ❑ 44 units, individuals
- ❑ 7 supportive units

2023

## Affordable Housing with Supportive Set-Asides



*899 Culver, 1616-1625 N. Clinton and  
699 E Main St., Rochester*

*Flower City  
Apartments*

Home Leasing

Services: Person  
Centered Housing  
Options & Spiritus  
Christi Prison  
Outreach

- ❑ 149 units, individuals
- ❑ 56 supportive units

2023

# Affordable Housing with Supportive Units



*1007 Union Avenue, Bronx*

*Victory  
Commons*

**Exact Capital**

**Services:  
Volunteers of  
America**

- 95 units, families
- 15 supportive units

2023

# Affordable Housing with Supportive Units



Photo: Chris Cooper

*483 Herkimer Street, Brooklyn*

*Herkimer  
Gardens*

CSD

Services:  
Federation of  
Organizations

- ❑ 121 units,  
individuals
- ❑ 60 supportive  
units

2023

## Affordable Housing with Supportive Units



*Dominic Hollow*

### **RISE Housing and Support Services**

- ❑ 60 units, individuals & families
  - ❑ 18 supportive units, individuals

*11 Dominic Drive, Ballston Spa*